

16 BOLTS

siegmund®





Page 684
Fast Clamping Bolt short



Page 684
Fast Clamping Bolt long



Page 685
Universal Bolt short



Page 685
Universal Bolt long



Page 686
Fast Clamping Bolt, flat short



Page 686
Fast Clamping Bolt, flat long



Page 687
Flush Mount Bolt short



Page 687
Flush Mount Bolt long



Page 688
Positioning Bolt



Page 689
Connecting Bolt short



Page 689
Connecting Bolt long



Page 690
Spacer Ring for Magnetic Bolt



Page 692
Magnetic Clamping Bolt 34



Page 692
Magnetic Clamping Bolt 46



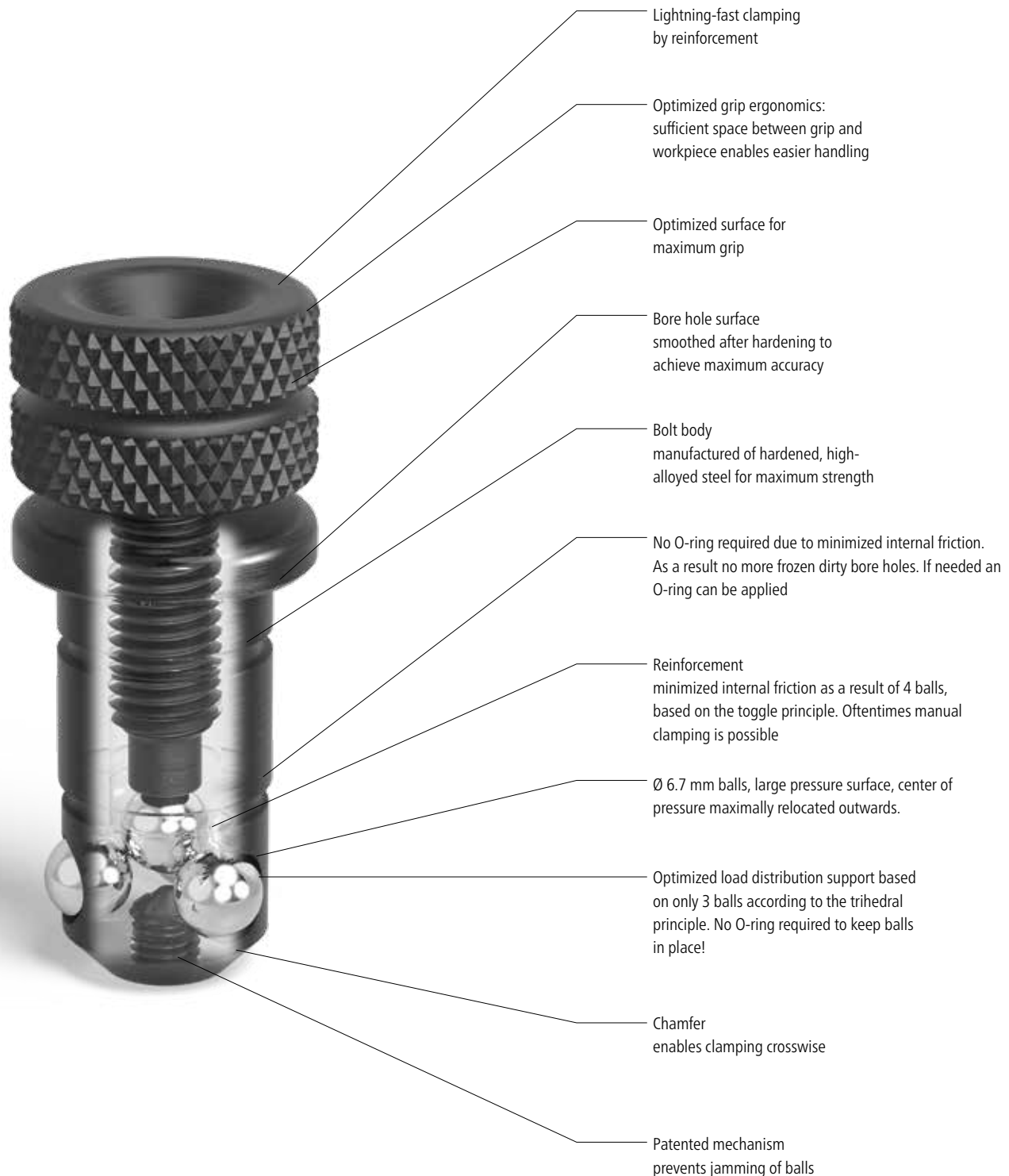
Page 692
Magnetic Clamping Bolt 58



Bolts

Lightning-fast and optimized

Due to its well-engineered mechanism it can be fixed and released by hand within seconds.



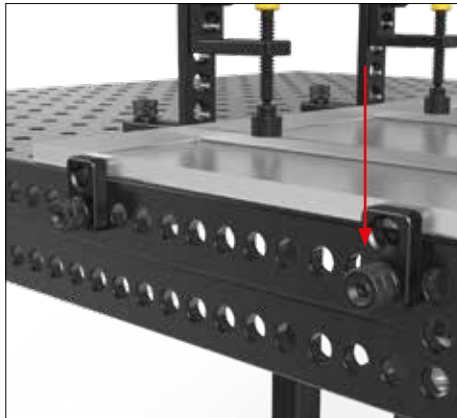


TIGHTENING TORQUE (AM)

The tightening torque is the force required to fasten the bolt using a torque wrench. In order to achieve maximum clamping force, the tightening torque should not exceed the recommended guideline.

The bolt was designed to only require a low torque to reach maximum clamping force, thereby enabling simple manual clamping.

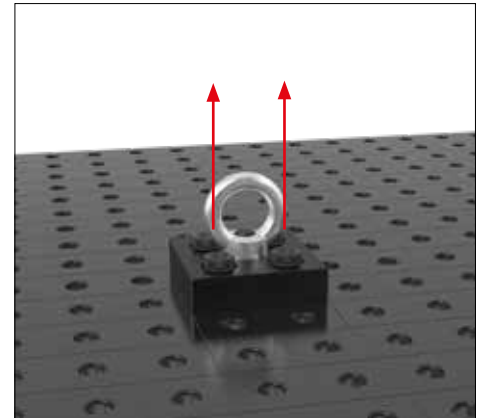
Max. AM of 160510: ≤ 10 Nm



SHEARING FORCE (SK)

The shearing force is the force which reacts laterally to the cross-sectional area of the bolt.

Max. SK of 160510: ≤ 55 kN



TENSILE FORCE (ZK)

The tensile force is the force created when pulling on fixed bolts.

Max. ZK of 160510 ≤ 10 kN

You can also find the product video on:

www.siegmund.com/V160510



Fast Clamping Bolt



Description:

Burnished Fast Clamping Bolt with twistlock, perfect connecting element between Siegmund components. It features especially large balls, which protect the bevel of the bore holes as a result of low surface pressure. The fourth ball located in the center, reduces internal friction and strengthens the power of the handwheel. The new design of the bolt is not equipped with O-rings, but it still is easy to clean.

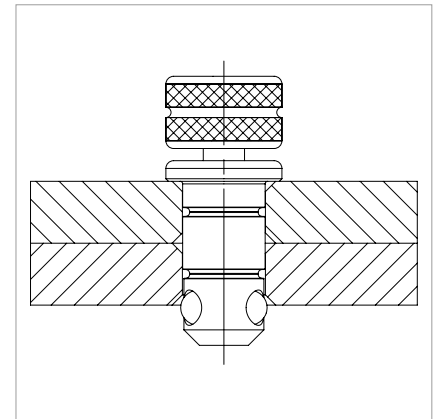
This Bolt is NOT approved for combining tables and U-shaped squares!



160510



160512



	Length: (a)	Ø: (o)	Weight:	SK:	AM:	ZK:	Item No.
Fast Clamping Bolt short - for clamping 2 components - burnished - with screw top	53 mm	16 mm	0,08 kg	55,00 kN	10,00 Nm	10,00 kN	2-160510 ●
Fast Clamping Bolt long - for clamping 3 components - burnished - with screw top	65 mm	16 mm	0,10 kg	55,00 kN	10,00 Nm	10,00 kN	2-160512 ●

SK=Shearing Force; AM=Tightening Torque; ZK=Tensile Force; ● = Item produced for stock; ○ = Item produced on order; Explanations see page 84

Universal Bolt

Description:

Burnished Universal Bolt (Locking Bolt), perfect connection element for Siegmund elements. It is used when elements of different material thickness are being interconnected. The clamping range of the short Universal Bolt is 22 to 28 mm. The long Universal Bolt has a clamping range of 34 to 40 mm. The large balls shift the center of pressure towards the outside, and prevent a displacement of the material due to low surface pressure, when there are high clamping forces in the direction of the bore hole.

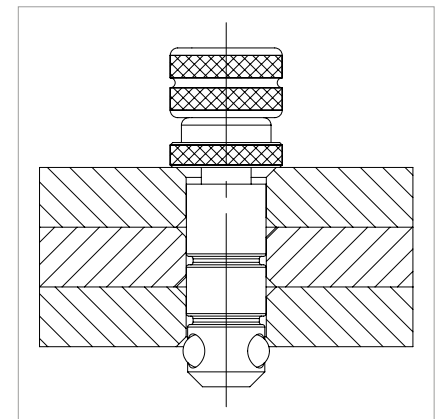
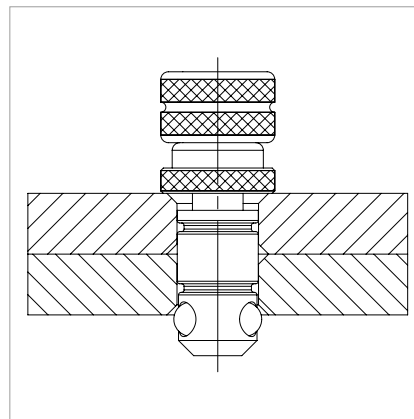
The Universal Bolt is clamped with the integrated handwheel or with an Allen Key 6 (Item No. 280852.1).

This Bolt is NOT approved for combining tables and U-shaped squares!



160532

160533



	Length: (a)	Ø: (o)	Weight:	SK:	AM:	ZK:	Item No.
Universal Bolt short - for clamping 2 components - burnished	59 mm	16 mm	0,11 kg	50,00 kN	10,00 Nm	10,00 kN	2-160532 ●
Universal Bolt long - for clamping 3 components - burnished	71 mm	16 mm	0,12 kg	50,00 kN	10,00 Nm	10,00 kN	2-160533 ●

SK=Shearing Force; AM=Tightening Torque; ZK=Tensile Force; ● = Item produced for stock; ○ = Item produced on order; Explanations see page 84



Fast Clamping Bolt, flat

Description:

Flat Burnished Clamping Bolt, mainly used for clamping of oblong holes. Like the countersunk bolt, it reduces protrusion.

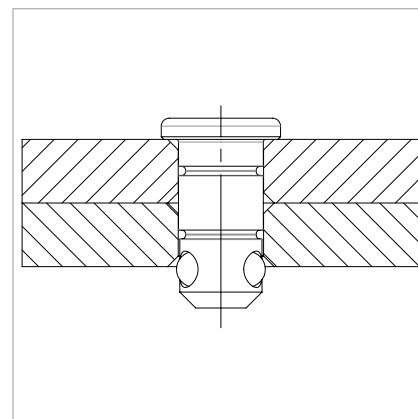
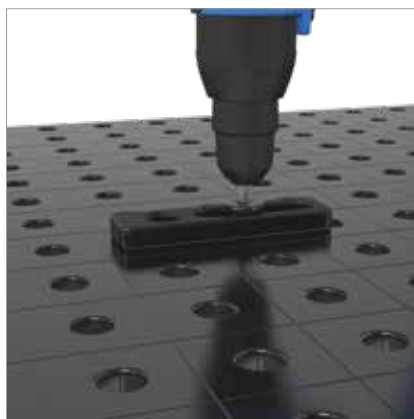
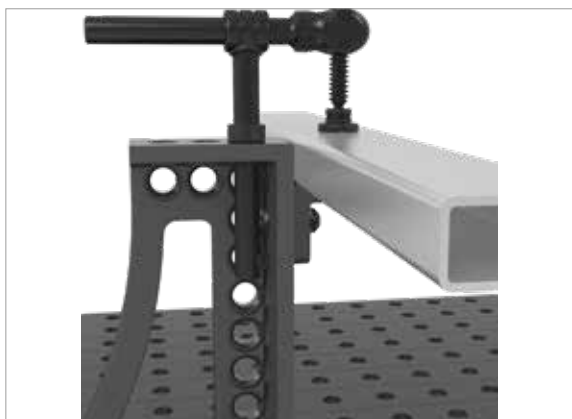
Ideal for cordless screwdriver with up to 10 Nm turning moment.

This Bolt is NOT approved for combining tables and U-shaped squares!



160522

160523



	Length: (a)	Ø: (o)	Weight:	SK:	AM:	ZK:	Item No.
Fast Clamping Bolt, flat short - for clamping 2 components - burnished	36 mm	16 mm	0,05 kg	55,00 kN	10,00 Nm	10,00 kN	2-160522 ●
Fast Clamping Bolt, flat long - for clamping 3 components - burnished	48 mm	16 mm	0,08 kg	55,00 kN	10,00 Nm	10,00 kN	2-160523 ●
Setscrew for 160522 - pack of 10							2-169085 ●
Setscrew for 160523 - pack of 10							2-169075 ●

SK=Shearing Force; AM=Tightening Torque; ZK=Tensile Force; ● = Item produced for stock; ○ = Item produced on order; Explanations see page 84

Flush Mount Bolt

Description:

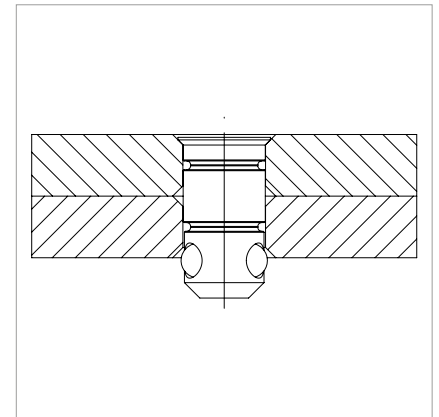
Flush Mount Bolt, used as a hidden connection between Siegmund elements. Its design corresponds with other connecting bolts with four balls. Its head disappears into the bore hole, to make it flush with the clamped component. The Flush Mount Bolt is not suitable for use in oblong slots.

This Bolt is NOT approved for combining tables and U-shaped squares!



160528

160529



	Length: (a)	Ø: (o)	Weight:	SK:	AM:	ZK:	Item No.
Flush Mount Bolt short - for clamping 2 components - burnished	31 mm	16 mm	0,04 kg	55,00 kN	10,00 Nm	3,00 kN	2-160528 ●
Flush Mount Bolt long - for clamping 3 components - burnished	43 mm	16 mm	0,05 kg	55,00 kN	10,00 Nm	3,00 kN	2-160529 ●

SK=Shearing Force; AM=Tightening Torque; ZK=Tensile Force; ● = Item produced for stock; ○ = Item produced on order; Explanations see page 84



Positioning Bolt

Description:

Positioning Bolt, serves as an adjustment tool for squares that only require a clamping bolt for fastening, in order to cost-effectively substitute for a second clamping bolt. In addition, various squares can be formed by spading, e.g. 90° or 45°.

This picture shows an application example of a customer generated template.

This Bolt is NOT approved for combining tables and U-shaped squares!



160540



	Length: (a)	Ø: (o)	Weight:	Item No.
Positioning Bolt - burnished	38 mm	16 mm	0,07 kg	2-160540 ●

● = Item produced for stock; ○ = Item produced on order; Explanations see page 84

Connecting Bolt

Description:

Connecting Bolt, especially designed as a fixed long-term connection of large Siegmund Elements, e.g. tables or U-shaped squares.

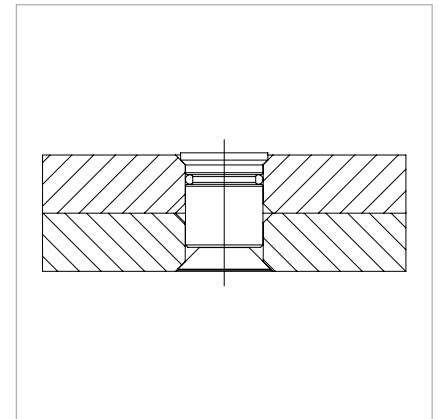
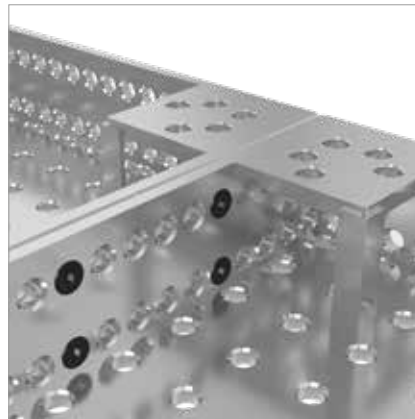
The countersunk Allen Wrench, and the ability of the clamping bolt to center itself, enable easy assembly. The flat head and the flat bolt contain a hexagon socket for clamping.

The connecting bolt provides a sturdy screw Connection. The Connecting Bolt should not be used in oblong slots.



160560.N

160561



		Length: (a)	Ø: (o)	Weight:	SK:	AM:	ZK:	Item No.
Connecting Bolt short								
- for connecting 2 components	◆ N BAR	25 mm	16 mm	0,03 kg	50,00 kN	15,00 Nm	4,00 kN	2-160560.N ●
- nitrided								
- with Allen key								
Connecting Bolt long								
- for connecting 3 components		37 mm	16 mm	0,05 kg	50,00 kN	15,00 Nm	4,00 kN	2-160561 ●
- burnished								
- with Allen key								

SK=Shearing Force; AM=Tightening Torque; ZK=Tensile Force; ● = Item produced for stock; ○ = Item produced on order; Explanations see page 84

Spare Parts for Bolts

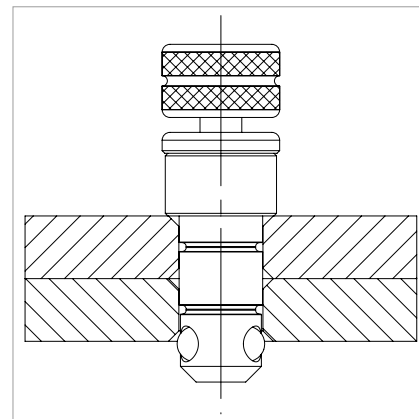
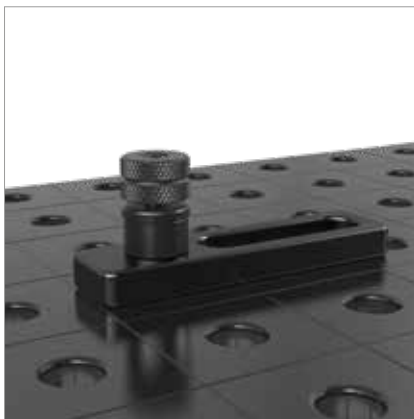
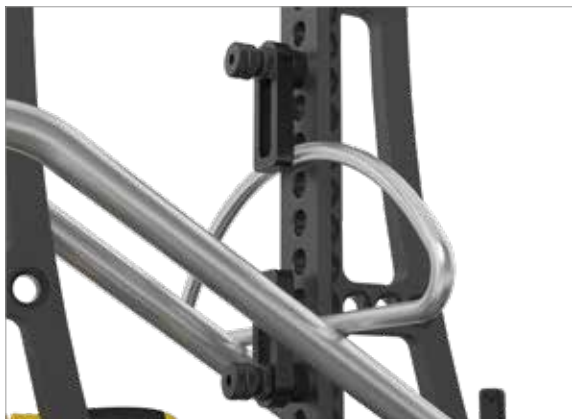
Description:

Spacer Sleeve, especially developed for applications that require space between two clamping elements. For example, it enables using a long clamping bolt instead of a short one.



160539

169103



	Height: (c)	Ø: (o)	Weight:	Item No.
Spacer Ring for Magnetic Bolt - burnished	12 mm	21 mm	0,02 kg	2-160539 ●
Spare Parts for Bolts - 10x 169008, 10x 169009, 5x 169074			0,02 kg	2-169103 ●

● = Item produced for stock; ○ = Item produced on order; Explanations see page 84



Magnetic Clamping Bolt

Description:

Magnetical Clamping Bolt, enables fast clamping without bolting or the use of tools. It is preferable for pressure-sensitive parts like thin sheet metal, as well as elements that cannot be resisted, e.g. enclosed sheet metal housing.



160740



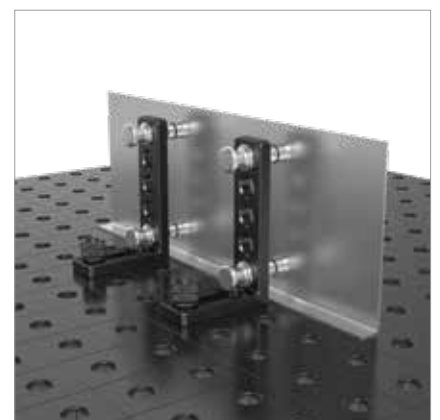
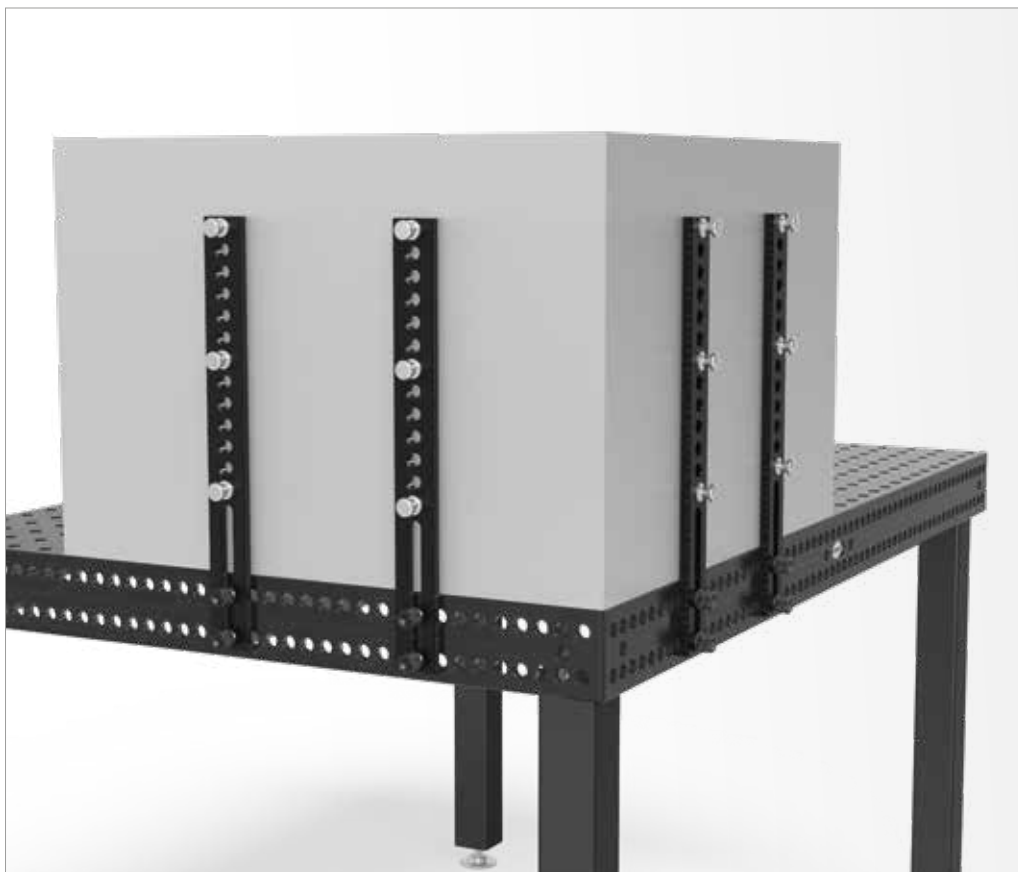
160740.1

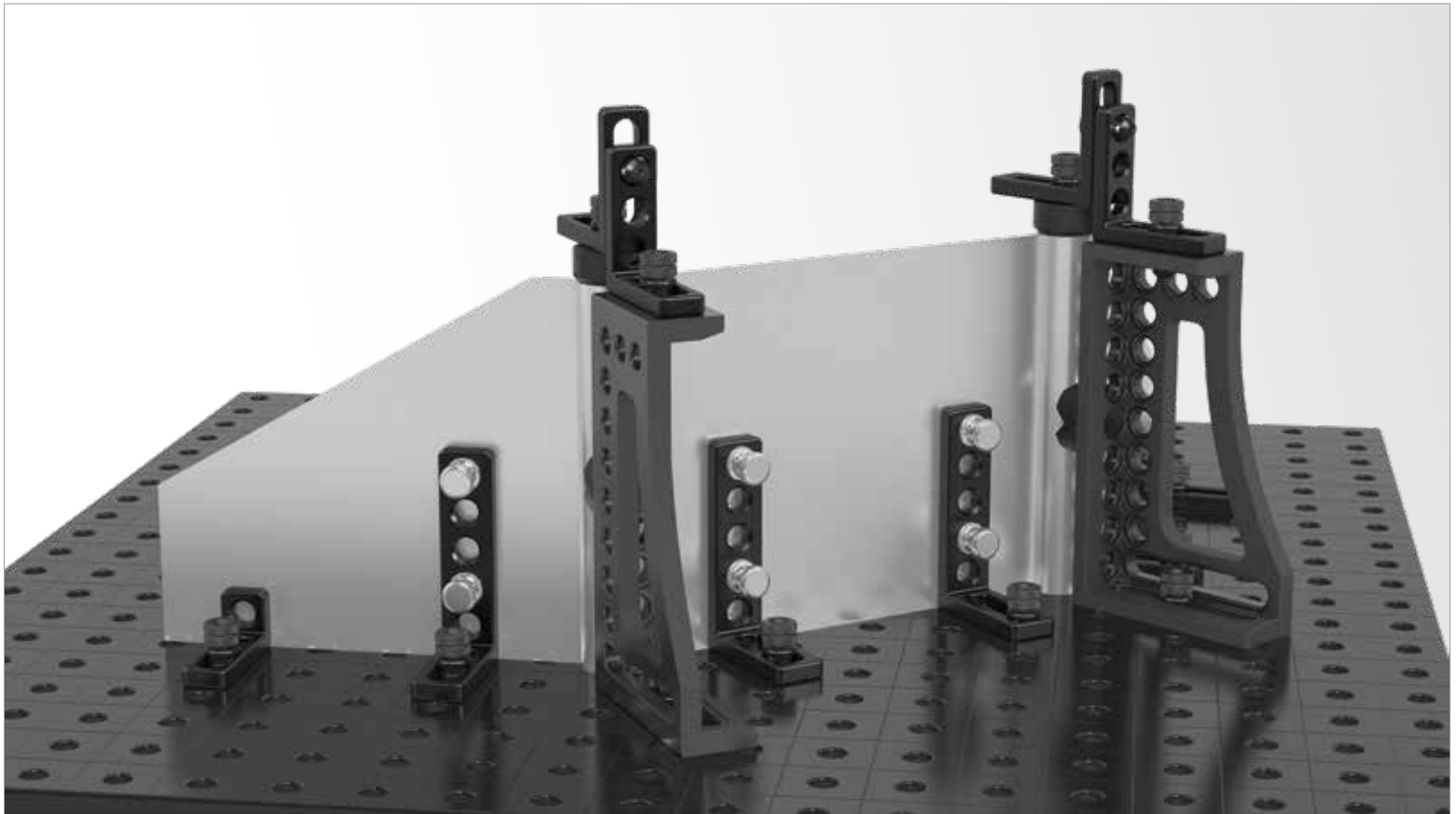


160740.2



160539





	Length: (a)	Height: (c)	Ø: (o)	Weight:	Item No.
Magnetic Clamping Bolt 34 - Length of Shaft 25 mm - Aluminum	● ALU 34 mm		16 mm	0,02 kg	2-160740 ●
Magnetic Clamping Bolt 46 - Length of Shaft 50 mm - Aluminum	● ALU 46 mm		16 mm	0,03 kg	2-160740.1 ●
Magnetic Clamping Bolt 58 - Length of Shaft 75 mm - Aluminum	● ALU 58 mm		16 mm	0,04 kg	2-160740.2 ●
Spacer Ring for Magnetic Bolt - burnished		12 mm	21 mm	0,02 kg	2-160539 ●

● = Item produced for stock; ○ = Item produced on order; Explanations see page 84