



Page 520  
**Sub Table Box for System 22**



Page 522  
**Tool Cart**



Page 523  
**Protective Welding Wall**



Page 524  
**Brush Ø 24 with protecting cover**



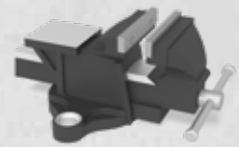
Page 525  
**Allen Wrench 5**



Page 526  
**Ground Connection Comfort**



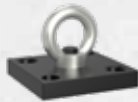
Page 527  
**Burner Holder**



Page 528  
**Standard bench vice 125 for System 16 / 22 / 28**



Page 528  
**Premium bench vice 125 for System 16 / 22 / 28**



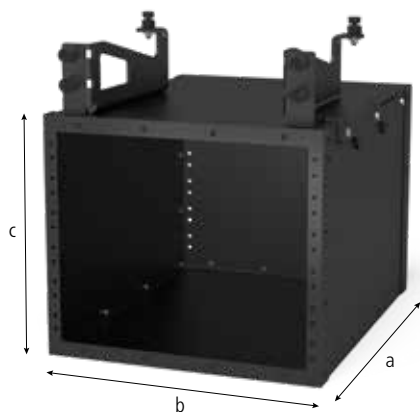
Page 530  
**Shipping Bracket with Fastening Plate 1800 kg load-bearing capacity**



Page 530  
**Shipping Bracket nitrided**



## Sub Table Box



220900



004200



004205



004210



004215

### Description:

Create and organise more storage space with the Siegmund ST Box and always have your tools at hand.

The ST Box has a total maximum load capacity of approx. 100 kg. Each drawer carries a maximum load of approx. 50 kg.

The totally enclosed design protects the drawer contents from dirt and weld spatters.

Regardless of table size and ribbing, the ST Box can be attached to every Siegmund welding table.

Self assembly instructions are provided and you can easily attach the assembled ST Box to your welding table.





	Length: (a)	Width: (b)	Height: (c)	Weight:	Item No.
<b>Sub Table Box for System 22</b> - varnished	630 mm	510 mm	420 mm	35,14 kg	2-220900 ●
<b>Drawer 60 mm</b>	590 mm	400 mm	60 mm	7,10 kg	2-004200 ●
<b>Drawer 120 mm</b>	590 mm	400 mm	120 mm	8,70 kg	2-004205 ●
<b>Drawer 180 mm</b>	590 mm	400 mm	180 mm	9,10 kg	2-004210 ●
<b>Drawer 240 mm</b>	590 mm	400 mm	240 mm	9,50 kg	2-004215 ●

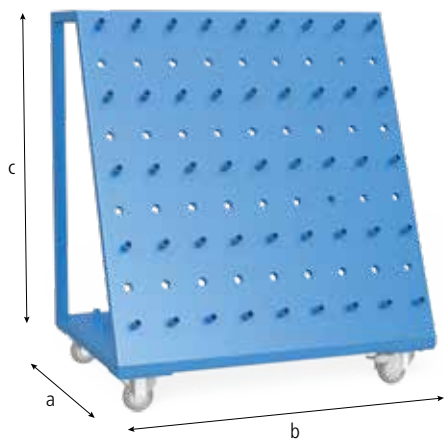
● = Item produced for stock; ○ = Item produced on order; Explanations see page 84



## Tool Cart

### Description:

Tool Cart, offers sufficient space for your Siegmund accessories. Your tools are handy, and you always keep track of them. Large squares are practically and safely stored in the inside space. Due to the casters, the tools are quickly transported to different points of use.



220910



Length: (a)	Width: (b)	Height: (c)	Weight:	Item No.
650 mm	900 mm	1020 mm	50,00 kg	2-220910 ●

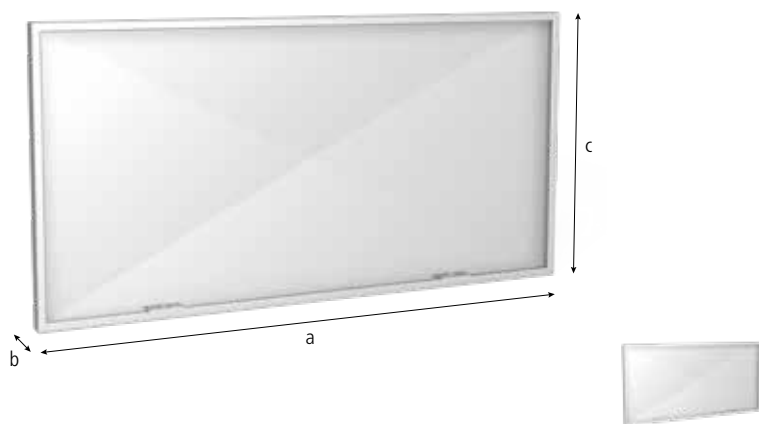
**Tool Cart**  
 - varnished  
 - Max. total weight 240 kg

● = Item produced for stock; ○ = Item produced on order; Explanations see page 84

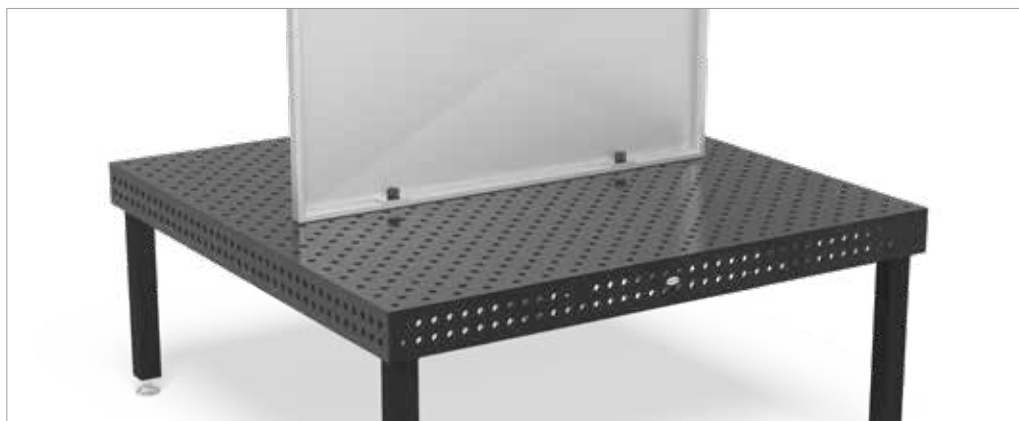
### Protective Welding Wall

**Description:**

Protective Welding Wall, enables dividing the table into two workspaces. Position and size of workspaces are determined by individual requirements. The Protective Wall protects workspaces that are located next to each other from welding spatters. The Protective Welding Wall is made of zinc coated sheet and is attached with two bolts. (The Protective Welding Wall is not scratch-proof due to production-related reasons).



280980



	Length: (a)	Width: (b)	Height: (c)	Ø: (o)	Weight:	SK:	AM:	ZK:	Item No.
<b>Protective Welding Wall</b> - Custom color varnish available against surcharge	1600 mm	50 mm	800 mm		23,00 kg				2-280980 ●
<b>Combination Fast Clamping Bolt short 28 -&gt; 22</b> - burnished	88 mm			40 mm	0,45 kg	130,00 kN	15,00 Nm	15,00 kN	2-002822 ●

SK=Shearing Force; AM=Tightening Torque; ZK=Tensile Force; ● = Item produced for stock; ○ = Item produced on order; Explanations see page 84



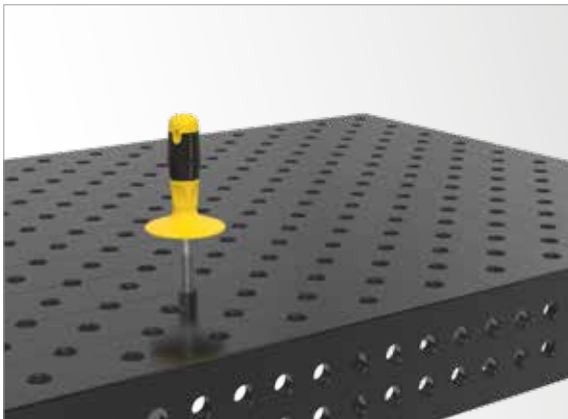
## Brush

### Description:

Brush with a diameter of 24 mm, especially designed for cleaning 22 mm bore holes. Grime can be removed effortlessly with this brush.



220820



Ø: (o)	Weight:	Item No.
24 mm	0,06 kg	2-220820 ●

**Brush with protecting cover**  
- with protecting cover

● = Item produced for stock; ○ = Item produced on order; Explanations see page 84

**Allen Wrench**

**Description:**

Allen Key 5, the practical tool to tighten screws quickly and safely. It is an effective support for working with clamping bolts, screw clamps and small universal squares.



220852



**Allen Wrench 5**  
- yellow

**Weight:**

**Item No.**

0,09 kg

2-220852 ●

● = Item produced for stock; ○ = Item produced on order; Explanations see page 84





## Ground Connection

### Description:

Ground Connection, guarantees 100% contact to the welding table, therefore no overheating is possible. Simple installation by fastening it in a system bore hole.

Load up to 500 ampere,  
Cable cross section 70-95 mm<sup>2</sup>.



000810



### Ground Connection Comfort

Weight:

Item No.

0,66 kg

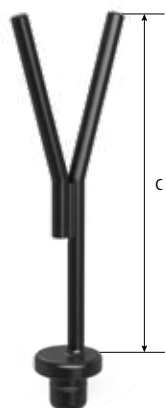
2-000810 ●

● = Item produced for stock; ○ = Item produced on order; Explanations see page 84

**Burner Holder**

**Description:**

Burner Holder, can be positioned in each system bore hole and offers an attachment for your welding burner.



220920



**Burner Holder**  
- burnished

Height: (c)	Weight:	Item No.
200 mm	0,36 kg	2-220920 ●

● = Item produced for stock; ○ = Item produced on order; Explanations see page 84



## Bench vice

### Description:

The basic equipment of each workshop is a reliable bench vice. Our Siegmund bench vice offers improved productivity.

To attach the bench vice to the table, fast clamping bolts and if necessary, reduction bushings are required.



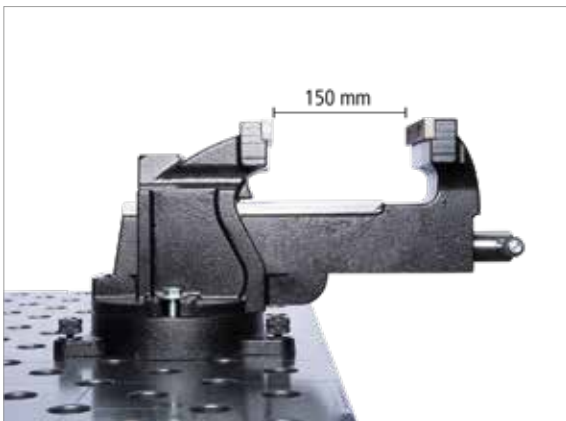
004300

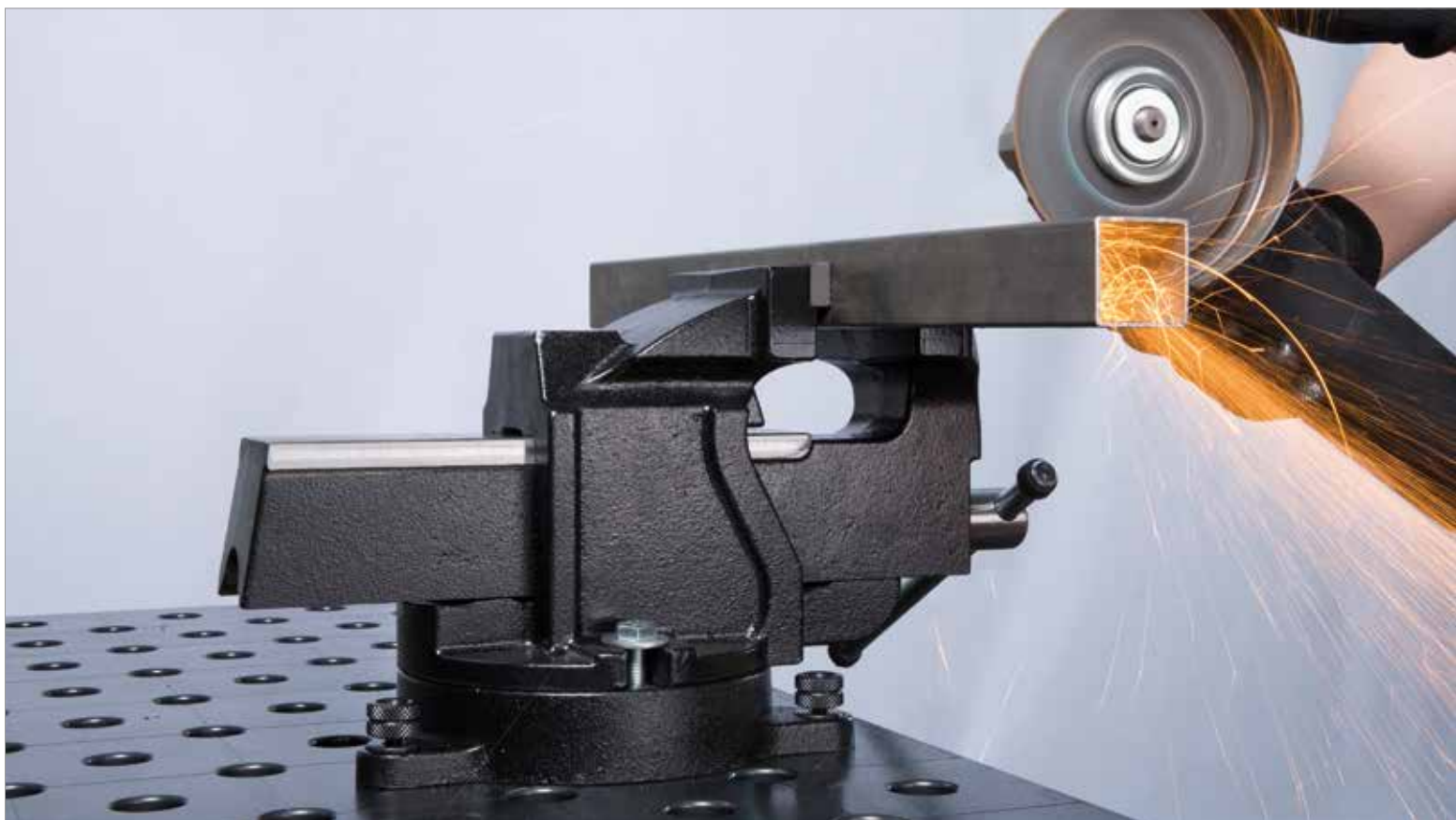


004303



004302



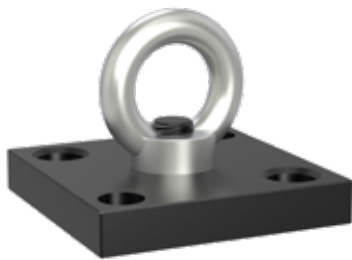


	Length: (a)	Ø: (o)	Weight:	SK:	AM:	ZK:	Item No.
<b>Premium bench vice 100 for System 16 / 22 / 28</b> - with 28 mm bore holes - Span width 83 mm			14,00 kg				2-004300 ●
<b>Standard bench vice 125 for System 16 / 22 / 28</b> - with 28 mm bore holes - Span width 150 mm			14,00 kg				2-004303 ●
<b>Premium bench vice 125 for System 16 / 22 / 28</b> - with 28 mm bore holes - Span width 150 mm			19,40 kg				2-004302 ●
<b>Fast Clamping Bolt long</b> - for clamping 3 components - burnished - with screw top	101 mm	22 mm	0,32 kg	130,00 kN	15,00 Nm	15,00 kN	2-220512 ●
<b>Reduction Bushing 28 -&gt; 22</b> - Clamping Bolt long required - burnished	35 mm	36 mm	0,10 kg				2-000544 ●

SK=Shearing Force; AM=Tightening Torque; ZK=Tensile Force; ● = Item produced for stock; ○ = Item produced on order; Explanations see page 84



## Shipping Bracket



000830.N



000835

### Description:

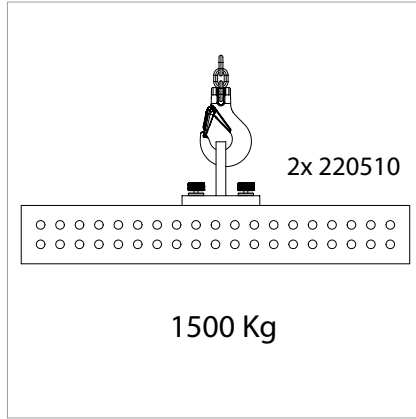
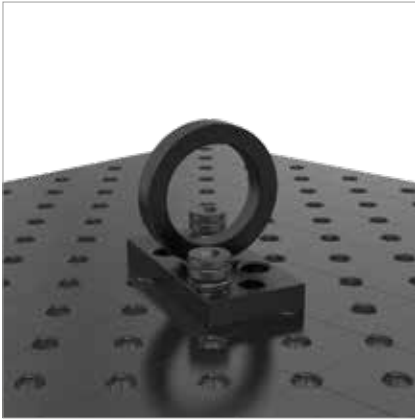
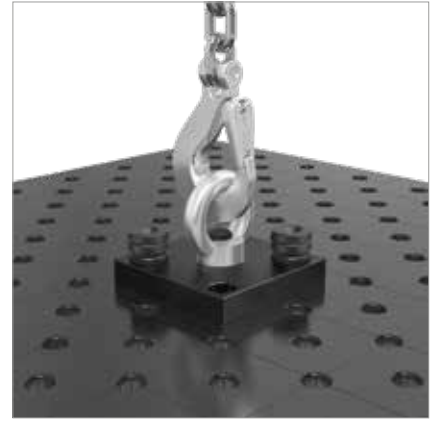
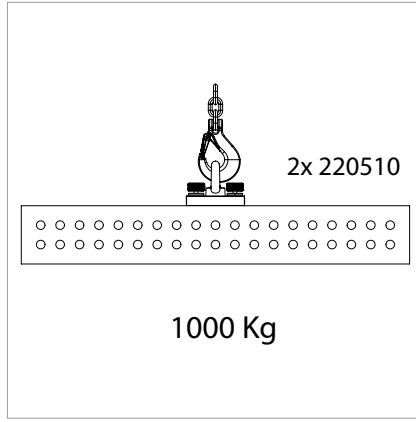
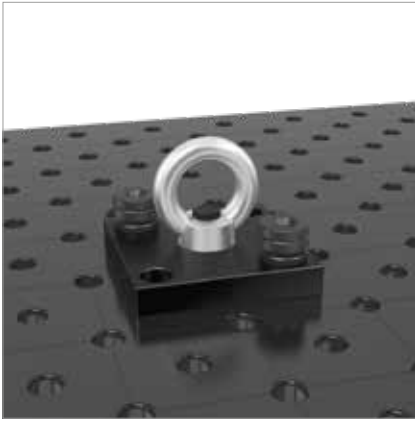
Shipping Bracket with Mounting Plate, load-bearing capacity 1.800 kg (with 2x 280510) / 1.000 kg (with 2x 002822). It is used to transport Siegmund welding tables and other heavy components safely and easily. It is fastened quickly and simply, using at least 2 clamping bolts.

The general rules and regulations for shipping brackets have to be followed while the bracket is in use. Depending on the specific application, the load-bearing capacity can be substantially reduced. During transport, the table must not be raised more than 100 mm, and no one is allowed below the table.

In addition, the Shipping Bracket can be used as a simple attachment for shipping straps.

Please consider following safety instructions:  
Ring nuts should be completely bolted.  
Ring nuts should bear flat and completely on support surface. Length of mating thread has to be sufficient. Lateral pull should be avoided.





	Length: (a)	Width: (b)	Height: (c)	Weight:	Item No.
<b>Shipping Bracket with Fastening Plate nitrided</b> - 1800 kg load-bearing capacity (with 2x 280510) - 1000 kg load-bearing capacity (with 2x 002822)	150 mm	150 mm	25 mm	4,70 kg	2-000830.N ●
<b>Shipping Bracket nitrided</b> - 2500 kg load-bearing capacity (with 2x 280510) - 1000 kg load-bearing capacity (with 2x 002822) - 700 kg load-bearing capacity (with 2x 160510)	200 mm	100 mm	165 mm	4,50 kg	2-000835.N ●

● = Item produced for stock; ○ = Item produced on order; Explanations see page 84

To fasten the shipping bracket, you need the Combination Fast Clamping Bolt short 28 -> 22 (Item No. 002822).

