



Page 454
Eccentric Stop Ø 100



Page 454
**Eccentric Stop Ø 60
with M10 thread**



Page 455
Universal Stop 150 L



Page 456
Universal Stop 225 L



Page 456
Universal Stop 300



Page 457
Universal Stop 500 S



Eccentric Stop

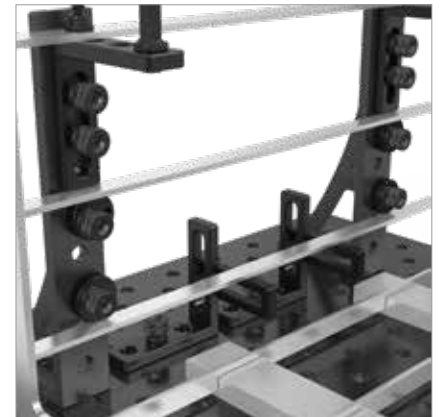
Description:

Eccentric Stops, perfectly suited for infinite adjustment of elements by simply twisting them, with minimum space requirements.



220403.N

220402.N



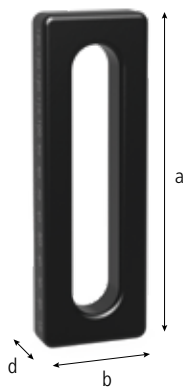
		Ø: (o)	MS: (d)	Weight:	Item No.
Eccentric Stop Ø 100 - nitrided - also serves as support surface		100 mm	18 mm	1,04 kg	2-220403.N ●
Eccentric Stop Ø 60 with M10 thread - nitrided - for ground connection		60 mm	18 mm	0,33 kg	2-220402.N ●

MS=Material thickness; ● = Item produced for stock; ○ = Item produced on order; Explanations see page 84

Universal Stop 150 L

Description:

Universal Stop 150 L, enables precise adjustment range of 0-100 mm for every element through the oblong slot.



220410.N



	Length: (a)	Width: (b)	MS: (d)	VB: (f)	Weight:	Item No.
Universal Stop 150 L - nitrided - Standard with fine scaling on both sides	150 mm	50 mm	18 mm	100 mm	0,67 kg	2-220410.N ●

MS=Material thickness; VB=Adjusting range; ● = Item produced for stock; ○ = Item produced on order; Explanations see page 84

Universal Stop 225 L / Universal Stop 300

Description:

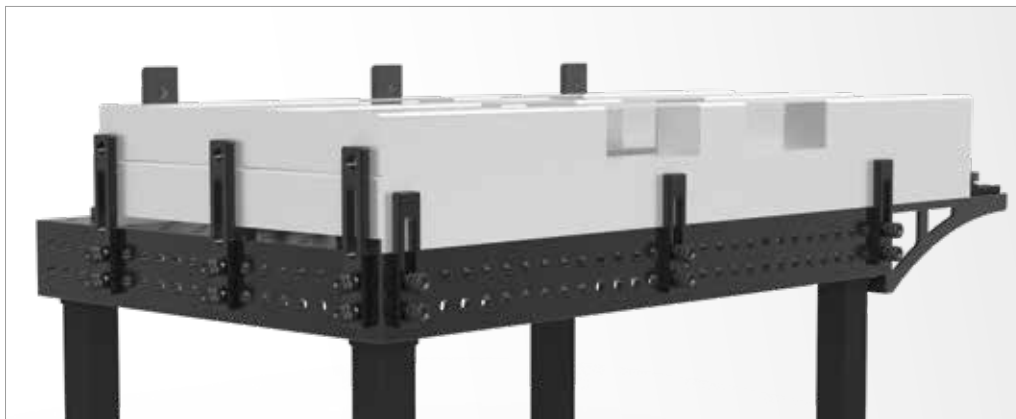
Universal Stop 225 L, by combining oblong slot (0-100 mm adjustable range) and system bore holes, it can be firmly fastened or variably adjusted. In addition, it can be used with prisms and adapters.



220420.N



220426.N



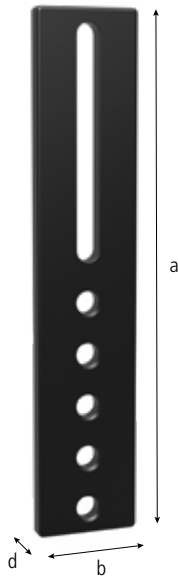
		Length: (a)	Width: (b)	MS: (d)	VB: (f)	Weight:	Item No.
Universal Stop 225 L - nitrided - Standard with fine scaling on both sides		225 mm	50 mm	18 mm	100 mm	1,14 kg	2-220420.N ●
Universal Stop 300 - 3 system bore holes - nitrided		300 mm	50 mm	18 mm	100 mm	1,54 kg	2-220426.N ●

MS=Material thickness; VB=Adjusting range; ● = Item produced for stock; ○ = Item produced on order; Explanations see page 84

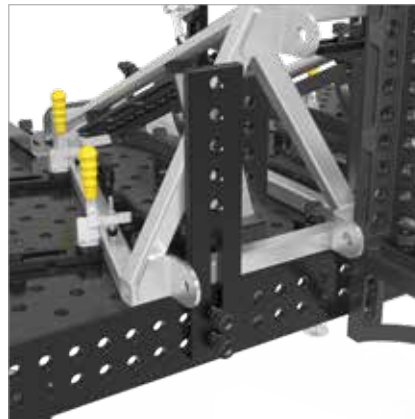
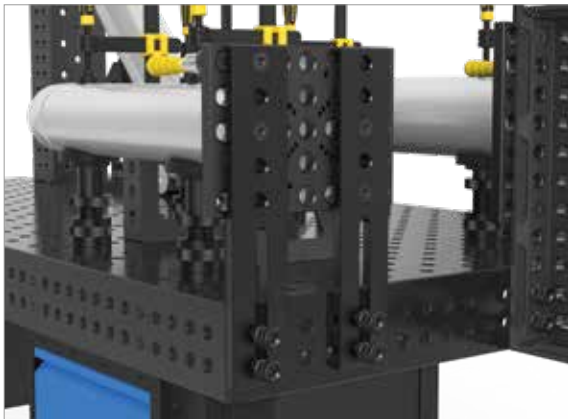
Universal Stop 500 S

Description:

Universal Stop 500 S was especially designed for working with stops and positioning of large components. The combination of system bore holes and the oblong slot (0-200 mm range), enables fixed and versatile adjustment, for a multitude of clamping options.



220430.N



	Length: (a)	Width: (b)	MS: (d)	VB: (f)	Weight:	Item No.
--	-------------	------------	---------	---------	---------	----------

Universal Stop 500 S

- 5 system drill holes
- nitrided



500 mm

100 mm

18 mm

200 mm

6,01 kg

2-220430.N ●

MS=Material thickness; VB=Adjusting range; ● = Item produced for stock; ○ = Item produced on order; Explanations see page 84