

# 22 BOLTS

siegmund®





Page 476  
**Fast Clamping Bolt short**



Page 476  
**Fast Clamping Bolt long**



Page 477  
**Universal Bolt, Comfort short**



Page 477  
**Universal Bolt, Comfort long**



Page 478  
**Fast Clamping Bolt, flat short**



Page 478  
**Fast Clamping Bolt, flat long**



Page 479  
**Flush Mount Bolt short**



Page 479  
**Flush Mount Bolt long**



Page 480  
**Positioning Bolt**



Page 481  
**Connecting Bolt short**



Page 481  
**Connecting Bolt long**



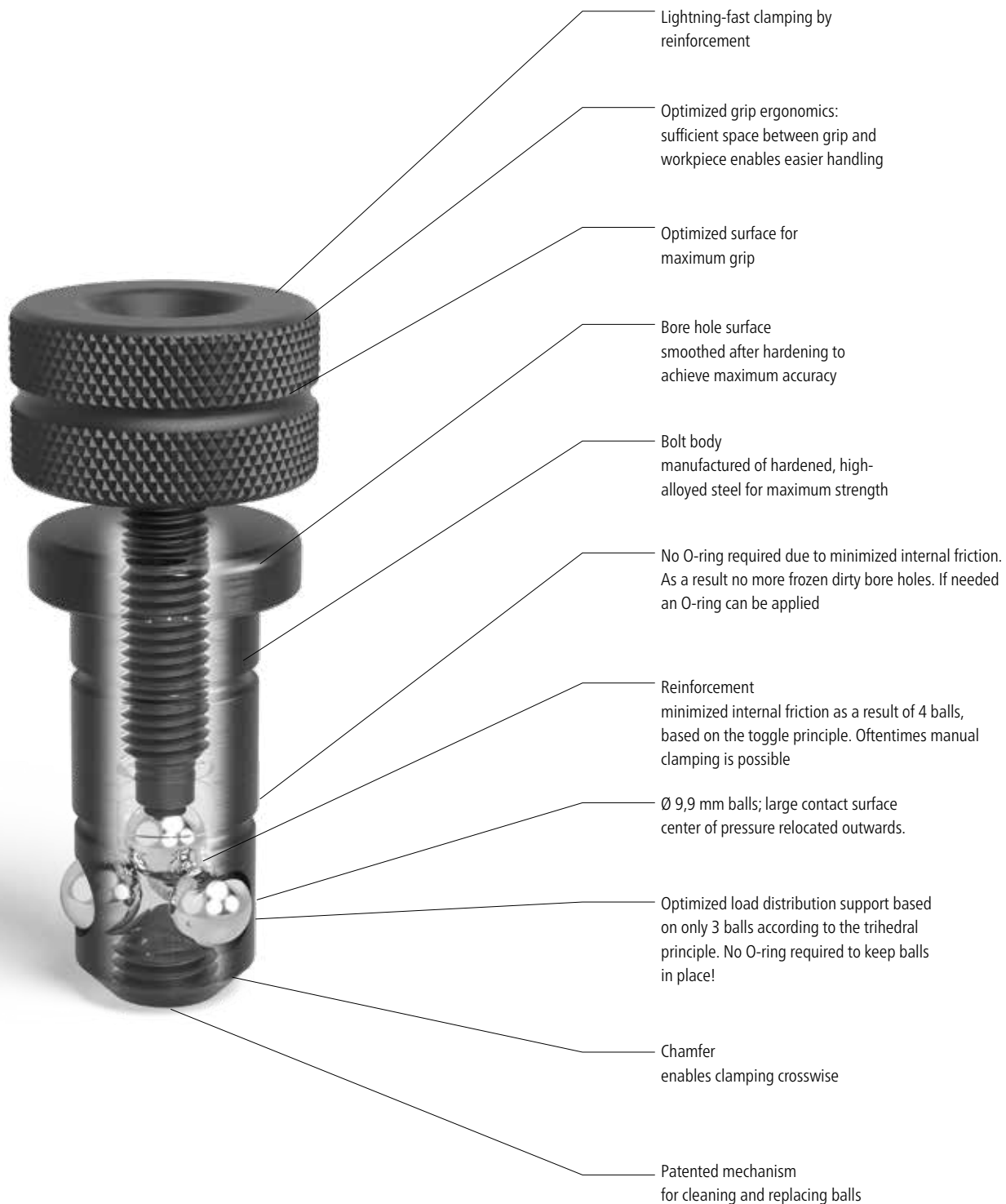
Page 482  
**Magnetic Clamping Bolt 60**



## Bolts

### Lightning-fast and optimized

Due to its well-engineered mechanism it can be fixed and released by hand within seconds.



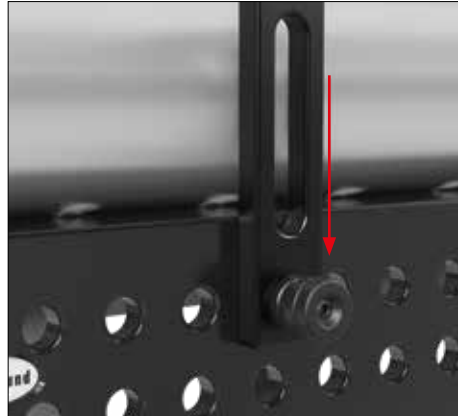


## TIGHTENING TORQUE (AM)

The tightening torque is the force required to fasten the bolt using a torque wrench. In order to achieve maximum clamping force, the tightening torque should not exceed the recommended guideline.

The bolt was designed to only require a low torque to reach maximum clamping force, thereby enabling simple manual clamping.

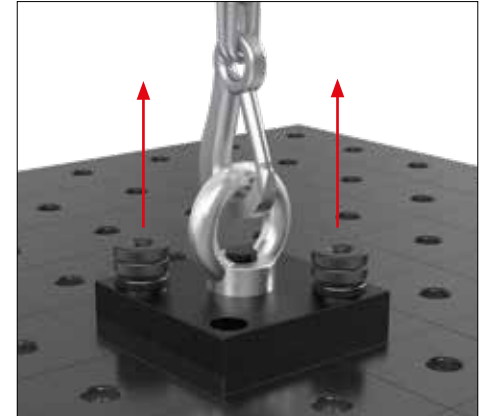
Max. AM of 220510:  $\leq 15$  Nm



## SHEARING FORCE (SK)

The shearing force is the force which reacts laterally to the cross-sectional area of the bolt.

Max. SK of 220510:  $\leq 130$  kN



## TENSILE FORCE (ZK)

The tensile force is the force created when pulling on fixed bolts.

Max. ZK of 220510:  $\leq 15$  kN



Fast Clamping Bolt



220510



220512

Description:

Burnished Fast Clamping Bolt with twistlock, perfect connecting element between Siegmund components. It features especially large balls, which protect the bevel of the bore holes as a result of low surface pressure. The fourth ball located in the center, reduces internal friction and strengthens the power of the handwheel. The new design of the bolt is not equipped with O-rings, but it still is easy to clean.

This Bolt is NOT approved for combining tables and U-shaped squares!



	Length: (a)	Ø: (o)	Weight:	SK:	AM:	ZK:	Item No.
<b>Fast Clamping Bolt short</b> - for clamping 2 components - burnished - with screw top	83 mm	22 mm	0,27 kg	130,00 kN	15,00 Nm	15,00 kN	2-220510 ●
<b>Fast Clamping Bolt long</b> - for clamping 3 components - burnished - with screw top	101 mm	22 mm	0,32 kg	130,00 kN	15,00 Nm	15,00 kN	2-220512 ●

SK=Shearing Force; AM=Tightening Torque; ZK=Tensile Force; ● = Item produced for stock; ○ = Item produced on order; Explanations see page 84

Universal Bolt

Description:

Burnished Universal Bolt (locking bolt), perfect connection element for Siegmund elements. It is used when elements of different material thickness are being interconnected. The clamping range of the short Universal Bolt is 33 to 39 mm. The long Universal Bolt has a clamping range of 51 to 57 mm. The large balls shift the center of pressure towards the outside, and prevent a displacement of the material due to low surface pressure, when there are high clamping forces in the direction of the bore hole.

The Universal Bolt is clamped with the integrated handwheel or with a Allen Key 14 (Item No. 280854).

This Bolt is NOT approved for combining tables and U-shaped squares!



220532



220533



	Length: (a)	Ø: (o)	Weight:	SK:	AM:	ZK:	Item No.
<b>Universal Bolt, Comfort short</b> - for clamping 2 components - burnished	93 mm	22 mm	0,35 kg	150,00 kN	15,00 Nm	15,00 kN	2-220532 ●
<b>Universal Bolt, Comfort long</b> - for clamping 3 components - burnished	111 mm	22 mm	0,41 kg	130,00 kN	15,00 Nm	15,00 kN	2-220533 ●

SK=Shearing Force; AM=Tightening Torque; ZK=Tensile Force; ● = Item produced for stock; ○ = Item produced on order; Explanations see page 84



## Fast Clamping Bolt, flat

### Description:

Flat Burnished Clamping Bolt, mainly used for clamping of oblong holes. Like the countersunk bolt, it reduces protrusion.

Ideal for cordless screwdriver with up to 25 Nm turning moment.

This Bolt is NOT approved for combining tables and U-shaped squares!



220522



220523



	Length: (a)	Ø: (o)	Weight:	SK:	AM:	ZK:	Item No.
<b>Fast Clamping Bolt, flat short</b> - for clamping 2 components - burnished	57 mm	22 mm	0,15 kg	130,00 kN	15,00 Nm	15,00 kN	2-220522 ●
<b>Fast Clamping Bolt, flat long</b> - for clamping 3 components - burnished	75 mm	22 mm	0,20 kg	130,00 kN	15,00 Nm	15,00 kN	2-220523 ●

SK=Shearing Force; AM=Tightening Torque; ZK=Tensile Force; ● = Item produced for stock; ○ = Item produced on order; Explanations see page 84



Flush Mount Bolt

Description:

Flush Mount Bolt, used as a hidden connection between Siegmund elements. Its design corresponds with other connecting bolts with four balls. Its head disappears into the bore hole, to make it flush with the clamped component. The Flush Mount Bolt is not suitable for use in oblong slots.

This Bolt is NOT approved for combining tables and U-shaped squares!



220528

220529



	Length: (a)	Ø: (o)	Weight:	SK:	AM:	ZK:	Item No.
<b>Flush Mount Bolt short</b> - for clamping 2 components - burnished	49 mm	22 mm	0,12 kg	130,00 kN	15,00 Nm	6,00 kN	2-220528 ●
<b>Flush Mount Bolt long</b> - for clamping 3 components - burnished	67 mm	22 mm	0,16 kg	130,00 kN	15,00 Nm	6,00 kN	2-220529 ●

SK=Shearing Force; AM=Tightening Torque; ZK=Tensile Force; ● = Item produced for stock; ○ = Item produced on order; Explanations see page 84



Positioning Bolt

Description:

Positioning Bolt, serves as an adjustment tool for squares that only require a clamping bolt for fastening, in order to cost-effectively substitute for a second clamping bolt. In addition, various squares can be formed by spading, e.g. 90° or 45°.

This Bolt is NOT approved for combining tables and U-shaped squares!



220540



	Length: (a)	Ø: (o)	Weight:	Item No.
Positioning Bolt - burnished	56 mm	22 mm	0,21 kg	2-220540 ●

● = Item produced for stock; ○ = Item produced on order; Explanations see page 84

Connecting Bolt

Description:

Flushmount Connecting Bolt, especially designed to serve as a fixed long-term connection between large Siegmund components, e.g. tables or U-shaped squares.

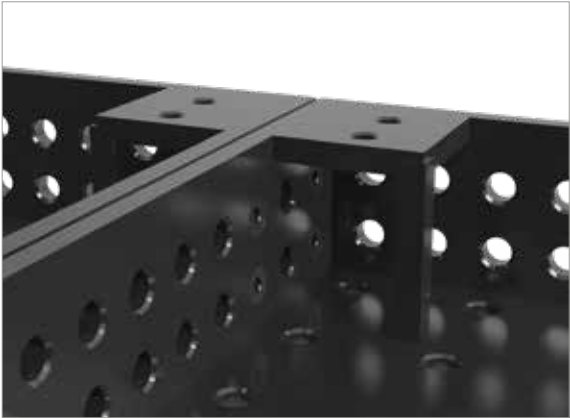
The flush mount Allen Key, and the ability of the clamping bolt to center itself, facilitate simple assembly. The countersunk head and the countersunk-head screw are equipped with a 10 hexagonal bit for clamping.

The Connecting Bolt enables sturdy bolting. The Connecting Bolt is not suitable for the use in oblong slots.



220560.N

220561



			Length: (a)	Ø: (o)	Weight:	SK:	AM:	ZK:	Item No.
<b>Connecting Bolt</b>									
- for connecting 2 components	  	36 mm	22 mm	0,06 kg	120,00 kN	15,00 Nm	6,00 kN	2-220560.N	●
- nitrided									
- with Allen key									
<b>Connecting Bolt long</b>									
- for connecting 3 components		54 mm	22 mm	0,12 kg	120,00 kN	15,00 Nm	6,00 kN	2-220561	●
- burnished									
- with Allen key									

SK=Shearing Force; AM=Tightening Torque; ZK=Tensile Force; ● = Item produced for stock; ○ = Item produced on order; Explanations see page 84

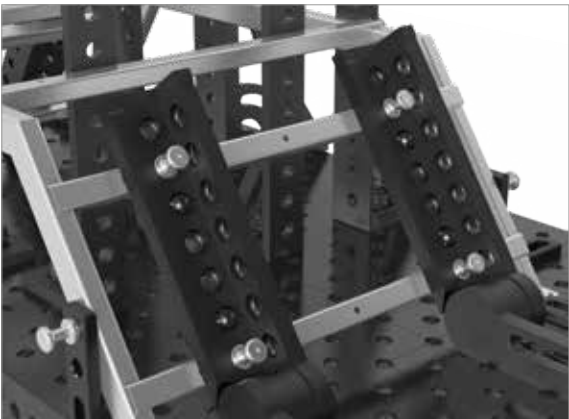
Magnetic Clamping Bolt

Description:

Magnetical Clamping Bolt, enables fast clamping without bolting or the use of tools. It is preferable for pressure-sensitive parts like thin sheet metal, as well as elements that cannot be resisted, e.g. enclosed sheet metal housing.



220740



	Length: (a)	Ø: (o)	Weight:	Item No.
<b>Magnetic Clamping Bolt 60</b> - Length of Shaft 25 mm - Aluminum	ALU 60 mm	22 mm	0,06 kg	2-220740 ●

● = Item produced for stock; ○ = Item produced on order; Explanations see page 84

