





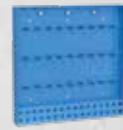
Page 322  
**Sub Table Box for System 28**



Page 324  
**Tool Cart**



Page 325  
**Tool Cart Compact**



Page 326  
**Toolwall**



Page 327  
**Module for Tool Wall**



Page 328  
**Protective Welding Wall**



Page 329  
**Ground Connection Comfort**



Page 330  
**Brush Ø 30 with protecting cover**



Page 331  
**Burner Holder**



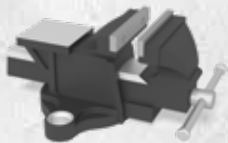
Page 332  
**Allen Wrench 6**



Page 332  
**Allen Wrench 6**



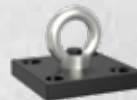
Page 333  
**Allen Wrench 14**



Page 334  
**Standard bench vice 125 for System 16 / 22 / 28**



Page 334  
**Premium bench vice 125 for System 16 / 22 / 28**



Page 336  
**Shipping Bracket with Fastening Plate 1800 kg load-bearing capacity**



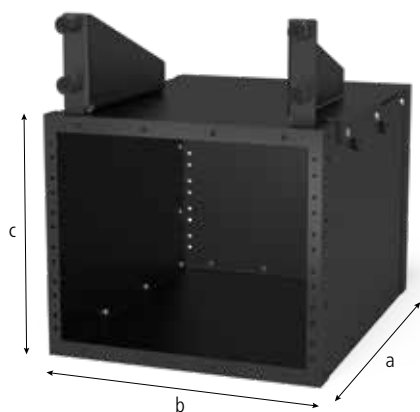
Page 336  
**Shipping Bracket nitrided**



Page 338  
**Table press System 28**



## Sub Table Box



280900



281900



004200



004205



004210



004215

### Description:

Create and organise more storage space with the Siegmund ST Box and always have your tools at hand.

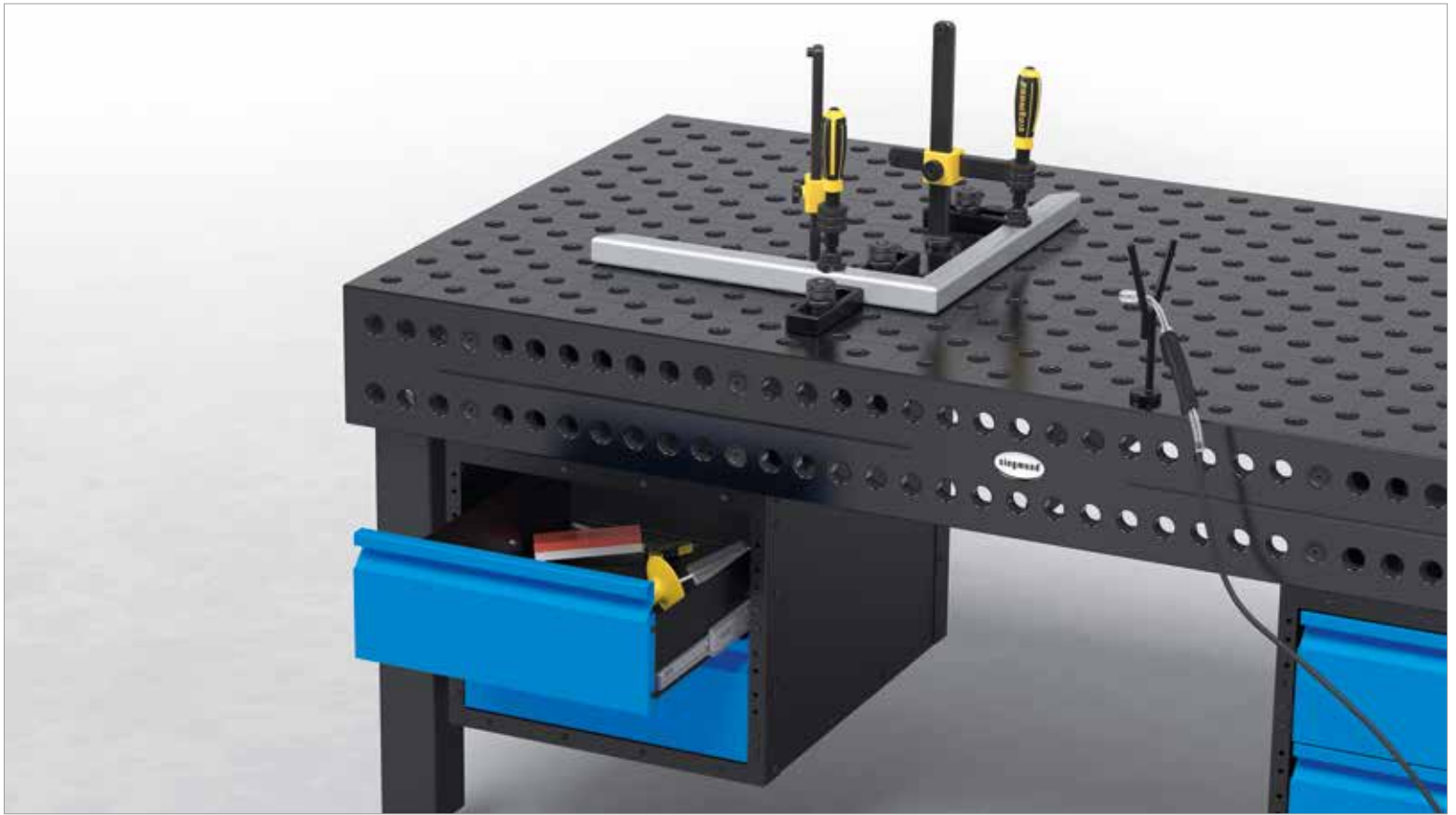
The ST Box has a total maximum load capacity of approx. 100 kg. Each drawer carries a maximum load of approx. 50 kg.

The totally enclosed design protects the drawer contents from dirt and weld spatters.

Regardless of table size and ribbing, the ST Box can be attached to every Siegmund welding table.

Self assembly instructions are provided and you can easily attach the assembled ST Box to your welding table.





	Length: (a)	Width: (b)	Height: (c)	Weight:	Item No.
<b>Sub Table Box for System 28</b> - varnished	630 mm	510 mm	420 mm	36,00 kg	2-280900 ●
<b>Sub Table Box for System 28 Basic</b> - varnished	630 mm	510 mm	420 mm	34,30 kg	2-281900 ●
<b>Drawer 60 mm</b>	590 mm	400 mm	60 mm	7,10 kg	2-004200 ●
<b>Drawer 120 mm</b>	590 mm	400 mm	120 mm	8,70 kg	2-004205 ●
<b>Drawer 180 mm</b>	590 mm	400 mm	180 mm	9,10 kg	2-004210 ●
<b>Drawer 240 mm</b>	590 mm	400 mm	240 mm	9,50 kg	2-004215 ●

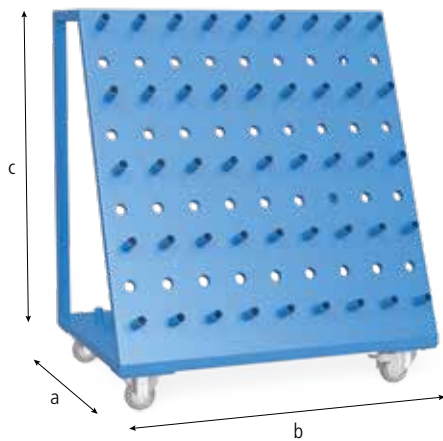
● = Item produced for stock; ○ = Item produced on order; Explanations see page 84



## Tool Cart

### Description:

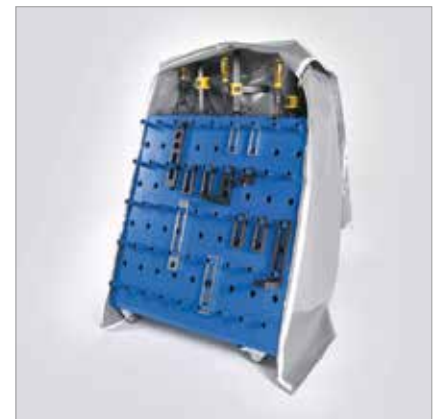
Tool Cart, offers sufficient space for your Siegmund accessories. Your tools are handy, and you always keep track of them. Large squares are practically and safely stored in the inside space. Due to the casters, the tools are quickly transported to different points of use.



280910



280915



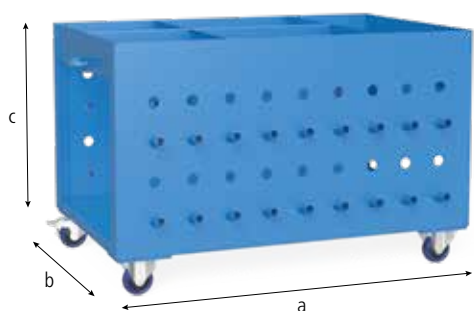
	Length: (a)	Width: (b)	Height: (c)	Weight:	Item No.
<b>Tool Cart</b> - varnished - Max. total weight 240 kg	650 mm	900 mm	1020 mm	50,00 kg	2-280910 ●
<b>Tarp</b> - for Tool Cart 280910					2-280915 ●

● = Item produced for stock; ○ = Item produced on order; Explanations see page 84

**Tool Cart Compact**

**Description:**

Compact Tool Cart, offers sufficient space for Siegmund accessories. You can always keep track, and all your tools are handy. Large squares are conveniently and safely stored in the internal space. The casters enable quick transportation of the Tool Trolley to where it is needed. In addition, it can be compactly stored below the welding table.



280911

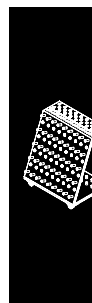


280916



	Length: (a)	Width: (b)	Height: (c)	Weight:	Item No.
<b>Tool Cart Compact</b> - varnished	1000 mm	650 mm	640 mm	59,00 kg	2-280911 ●
<b>Tarp</b> - for Tool Cart Compact 280911					2-280916 ●

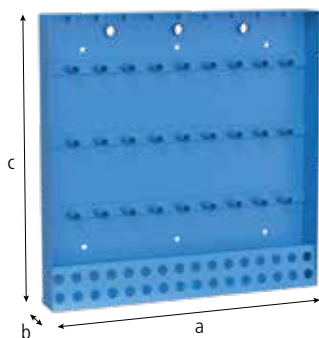
● = Item produced for stock; ○ = Item produced on order; Explanations see page 84



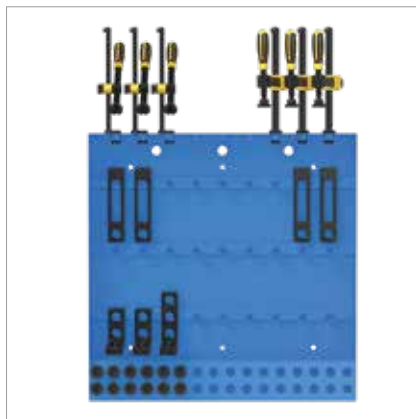
## Toolwall

### Description:

With the Toolwall Siegmund accessories are always within reach quickly. It can easily be bolted to the table, and attached to the wall with screws.



280912



	Length: (a)	Width: (b)	Height: (c)	Weight:	Item No.
<b>Toolwall</b> - varnished	800 mm	100 mm	800 mm	22,50 kg	2-280912 ●

● = Item produced for stock; ○ = Item produced on order; Explanations see page 84

## Modular Tool Panel

### Description:

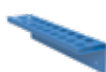
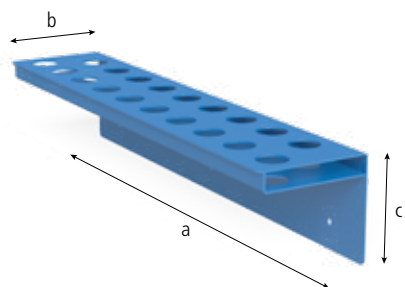
Modular Tool Panel - create your own personal toolwall by using different components.

The Module 280930, is suitable for screw clamps, prisms and bolts.

The Module 280931 (without bushing) can only be used with prisms and bolts.

By using the pin 280936 you can hang up all components with a drill hole of System 28.

The required back board is not included in delivery. We recommend using a glue-laminated wood board with a thickness of at least 5 cm.



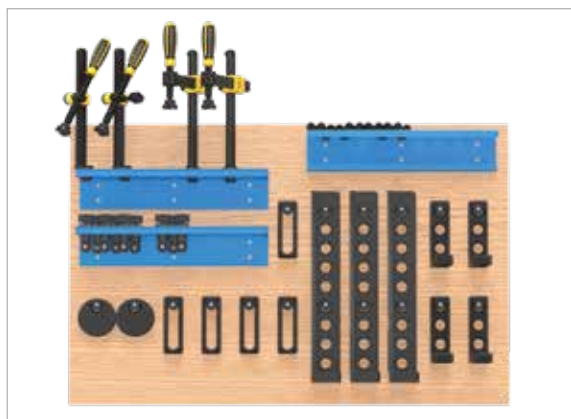
280930



280931



280936



	Length: (a)	Width: (b)	Height: (c)	Ø: (o)	Weight:	Item No.
<b>Module for Tool Wall</b> - varnished	500 mm	100 mm	110 mm	28 mm	2,20 kg	2-280930 ●
<b>Module for Tool Wall without Sleeves</b> - varnished	500 mm	100 mm	110 mm	28 mm	1,90 kg	2-280931 ●
<b>Pin for Toolwall</b> - burnished	37 mm			28 mm	0,10 kg	2-280936 ●
<b>Set Module for Tool Wall</b> - consisting of 2x 280930, 2x 280931, 5x 280936.10						2-280930.Set ●

● = Item produced for stock; ○ = Item produced on order; Explanations see page 84



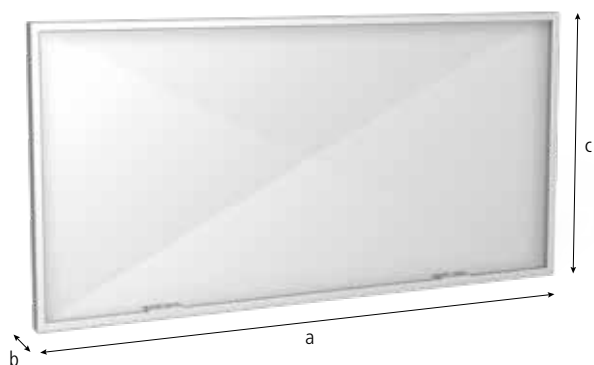


## Protective Welding Wall

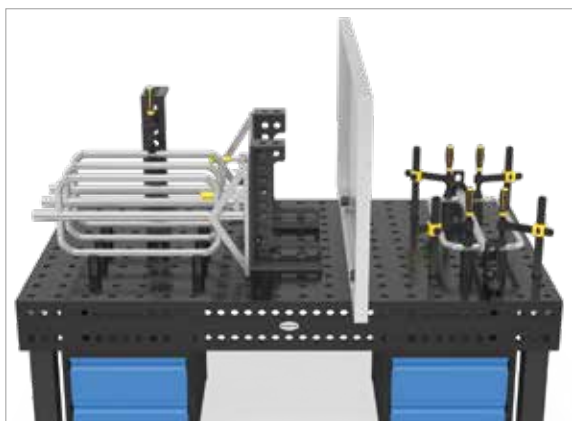
### Description:

Protective Welding Wall, enables dividing the table into two workspaces. Position and size of workspaces are determined by individual requirements. The Protective Wall protects workspaces that are located next to each other from welding spatters. The Protective Welding Wall is made of zinc coated sheet and is attached with two bolts.

(The Protective Welding Wall is not scratch-proof due to production-related reasons).



280980



Length: (a)	Width: (b)	Height: (c)	Weight:	Item No.
1600 mm	50 mm	800 mm	23,00 kg	2-280980 ●

**Protective Welding Wall**  
- Custom color varnish available against surcharge

● = Item produced for stock; ○ = Item produced on order; Explanations see page 84

**Ground Connection Comfort**

**Description:**

Ground Connection, guarantees 100% contact to the welding table, therefore no overheating is possible. Simple installation by fastening it in a system bore hole.

Load up to 500 ampere,  
Cable cross section 70-95 mm<sup>2</sup>.



000810



**Ground Connection Comfort**

**Weight:**

**Item No.**

0,66 kg

2-000810 ●

● = Item produced for stock; ○ = Item produced on order; Explanations see page 84



## Brush

### Description:

Brush with a diameter of 30 mm, especially designed for cleaning 28 mm bore holes. Grime can be removed effortlessly with this brush.



280820

280820.10



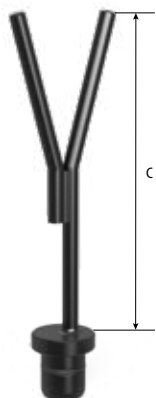
	Ø: (o)	Weight:	Item No.
<b>Brush Ø 30 with protecting cover</b> - with protecting cover	30 mm	0,06 kg	2-280820 ●
<b>Brush Ø 30 for drill bit / 10 piece pack</b>	30 mm	0,06 kg	2-280820.10 ●

● = Item produced for stock; ○ = Item produced on order; Explanations see page 84

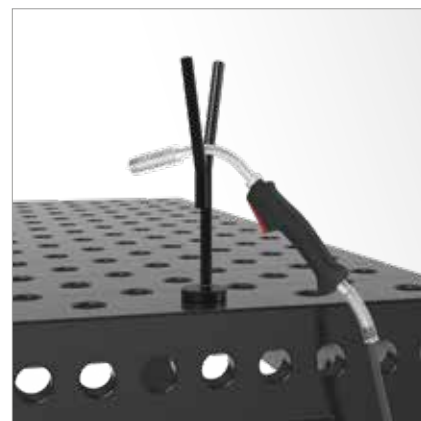
**Burner Holder**

**Description:**

Burner Holder, can be positioned in each system bore hole and offers an attachment for your welding burner.



280920



**Burner Holder**  
- burnished

Height: (c)	Weight:	Item No.
200 mm	0,50 kg	2-280920 ●

● = Item produced for stock; ○ = Item produced on order; Explanations see page 84



## Allen Wrench 6

### Description:

Allen Key 6, the practical tool to tighten screws quickly and safely. It is an effective support for working with clamping bolts, screw clamps and small universal squares.



280852.1

280852



**Allen Wrench 6**  
- yellow

Weight:

0,09 kg

Item No.

2-280852.1 ●

**Allen Wrench 6**  
- red

0,50 kg

2-280852 ●

● = Item produced for stock; ○ = Item produced on order; Explanations see page 84

**Allen Wrench 14**

**Description:**

Allen Wrench 14, used to tighten positioning bolts and large universal squares.



280854



Allen Wrench 14	Weight:	Item No.
	0,45 kg	2-280854 ●

● = Item produced for stock; ○ = Item produced on order; Explanations see page 84



## Bench vice

### Description:

The basic equipment of each workshop is a reliable bench vice. Our Siegmund bench vice offers improved productivity.

To attach the bench vice to the table, fast clamping bolts and if necessary, reduction bushings are required.



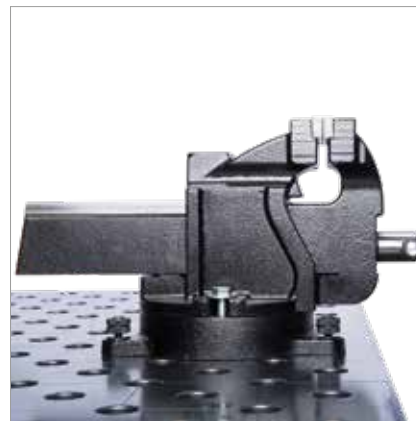
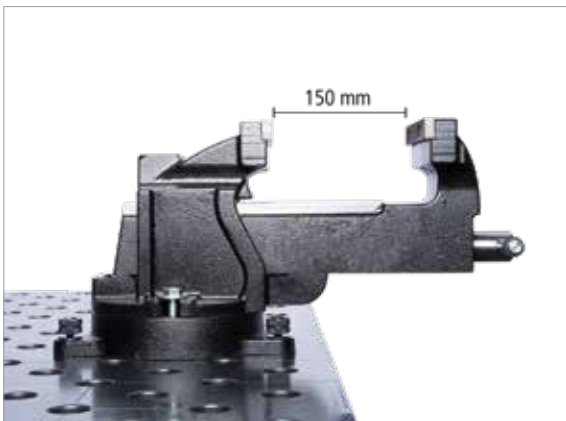
004300

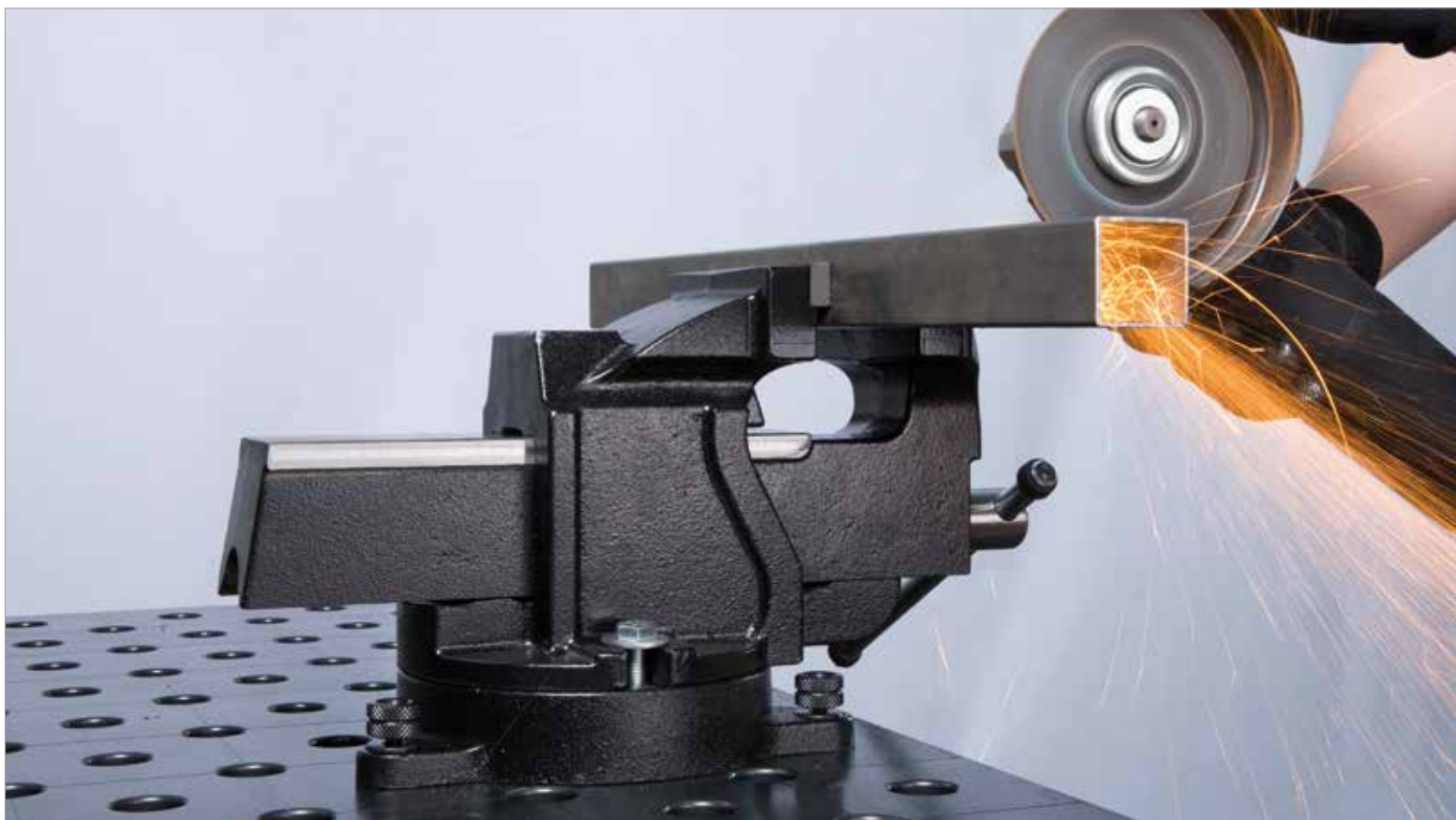


004303



004302





	Length: (a)	Ø: (o)	Weight:	SK:	AM:	ZK:	Item No.
<b>Premium bench vice 100 for System 16 / 22 / 28</b> - with 28 mm bore holes - Span width 83 mm			14,00 kg				2-004300 ●
<b>Standard bench vice 125 for System 16 / 22 / 28</b> - with 28 mm bore holes - Span width 150 mm			14,00 kg				2-004303 ●
<b>Premium bench vice 125 for System 16 / 22 / 28</b> - with 28 mm bore holes - Span width 150 mm			19,40 kg				2-004302 ●
<b>Fast Clamping Bolt short</b> - for clamping 2 components - burnished - with screw top	95 mm	28 mm	0,54 kg	220,00 kN	25,00 Nm	25,00 kN	2-280510 ●

SK=Shearing Force; AM=Tightening Torque; ZK=Tensile Force; ● = Item produced for stock; ○ = Item produced on order; Explanations see page 84





## Shipping Bracket

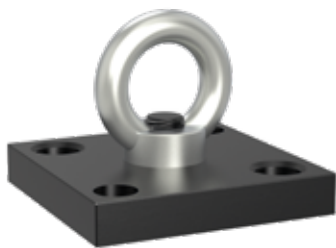
### Description:

Shipping Bracket with Mounting Plate, load-bearing capacity 1.800 kg (with 2x 280510) / 1.000 kg (with 2x 002822). It is used to transport Siegmund welding tables and other heavy components safely and easily. It is fastened quickly and simply, using at least 2 clamping bolts.

The general rules and regulations for shipping brackets have to be followed while the bracket is in use. Depending on the specific application, the load-bearing capacity can be substantially reduced. During transport, the table must not be raised more than 100 mm, and no one is allowed below the table.

In addition, the Shipping Bracket can be used as a simple attachment for shipping straps.

Please consider following safety instructions:  
 Ring nuts should be completely bolted. Ring nuts should bear flat and completely on support surface.  
 Length of mating thread has to be sufficient.  
 Lateral pull should be avoided.



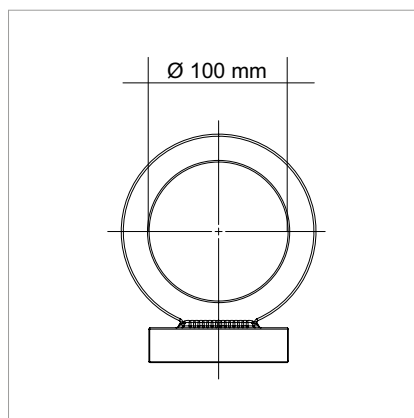
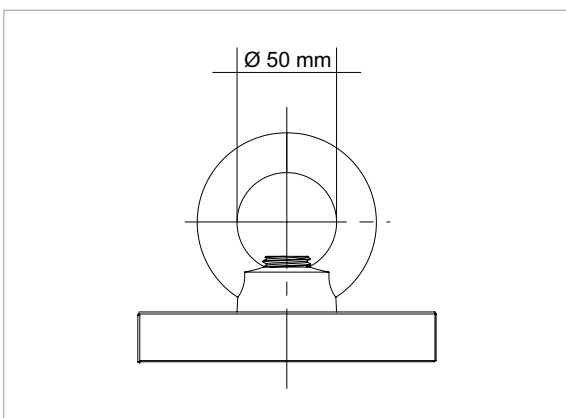
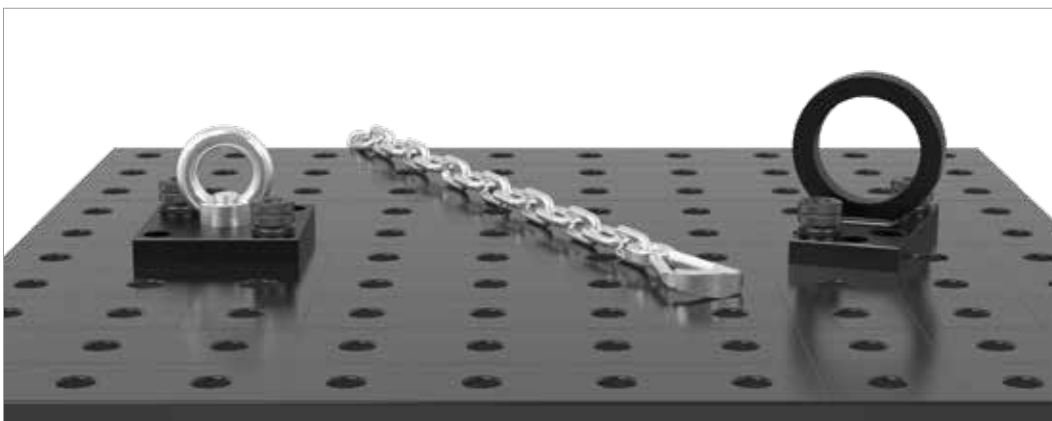
000830.N.T1

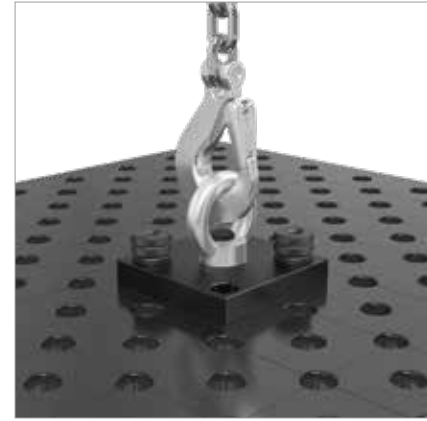
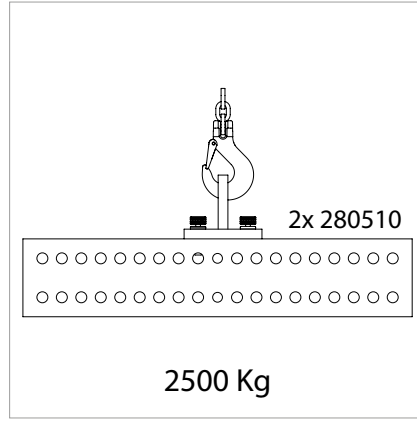
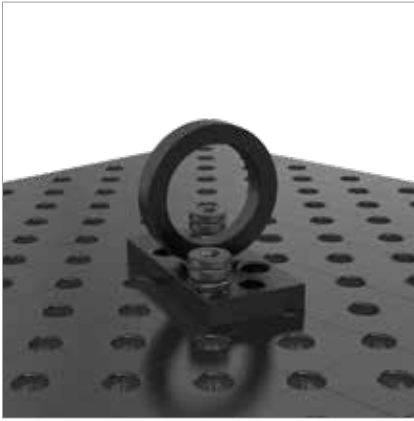
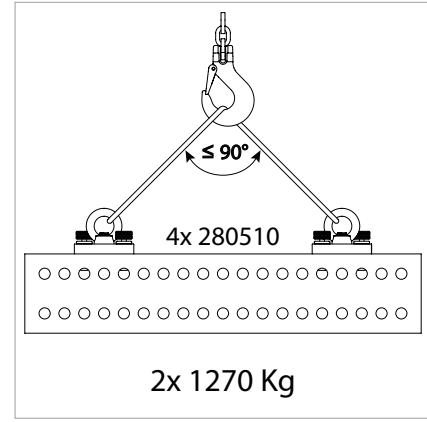
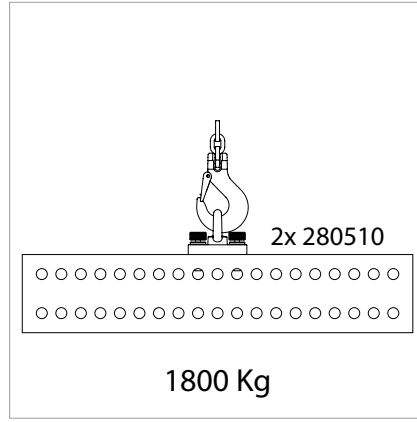
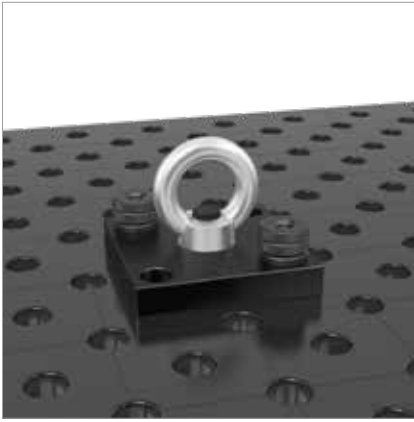
000831



000835.N

000830.N





	Length: (a)	Width: (b)	Height: (c)	Weight:	Item No.
<b>Shipping Bracket with Fastening Plate nitrided</b> - 1800 kg load-bearing capacity (with 2x 280510) - 1000 kg load-bearing capacity (with 2x 002822)	150 mm	150 mm	25 mm	4,70 kg	2-000830.N ●
<b>Mounting Plate, 150x150x25 for Shipping Bracket</b>	150 mm	150 mm	25 mm	3,90 kg	2-000830.N.T1 ●
<b>Shipping Bracket without Fastening Plate</b>				0,70 kg	2-000831 ●
<b>Shipping Bracket nitrided</b> - 2500 kg load-bearing capacity (with 2x 280510) - 1000 kg load-bearing capacity (with 2x 002822) - 700 kg load-bearing capacity (with 2x 160510)	200 mm	100 mm	165 mm	4,50 kg	2-000835.N ●

● = Item produced for stock; ○ = Item produced on order; Explanations see page 84



## Table press



28004643

### Description:

Perfect weldments by pre-stressing before welding.

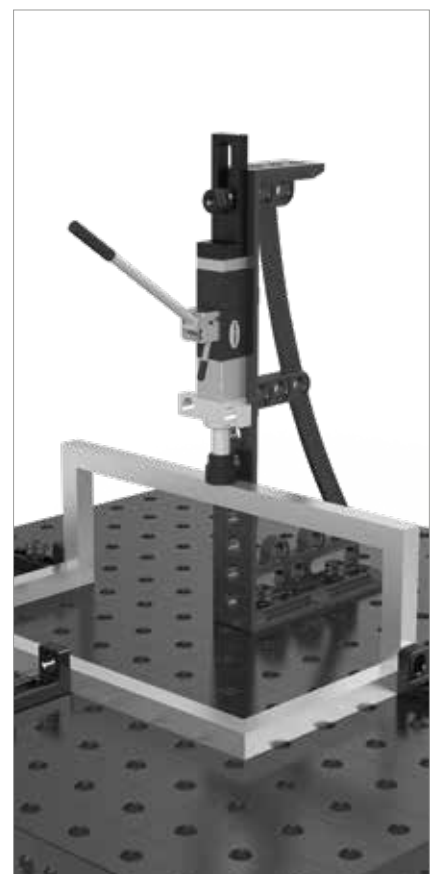
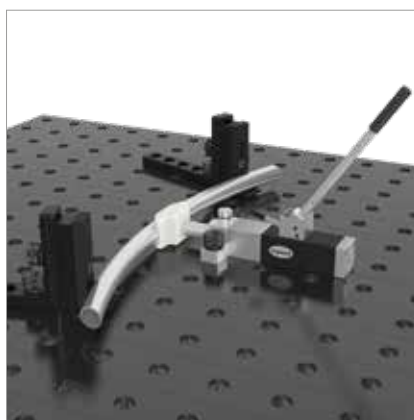
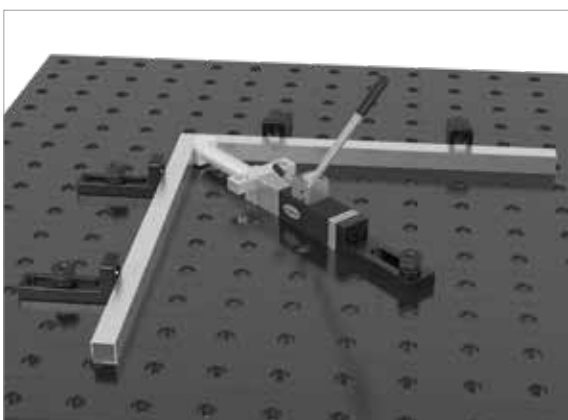
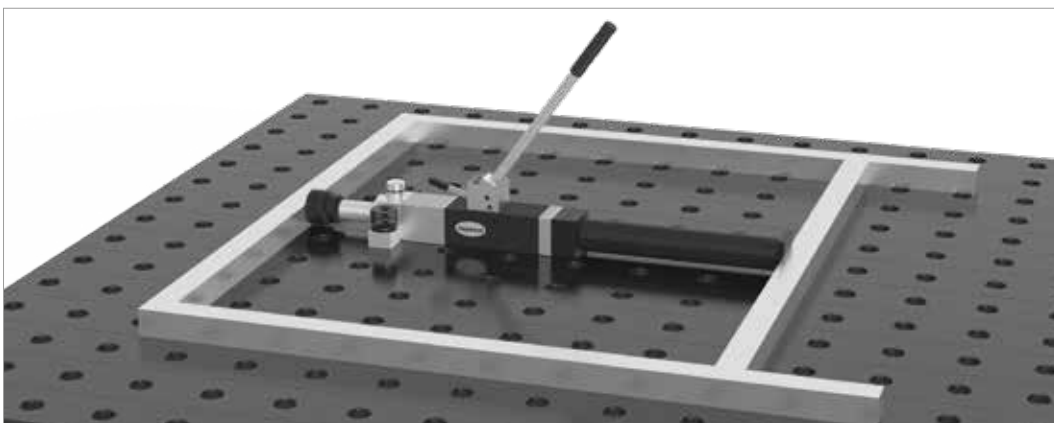
The table press is used for straightening deformed steel products. With a compressive force of 2,5 tons, parts that have unwanted unevenness or tension in the material, can be straightened. With the additionally available pipe bending stamp, pipes with a diameter of up to 42 mm can be bent flexibly.

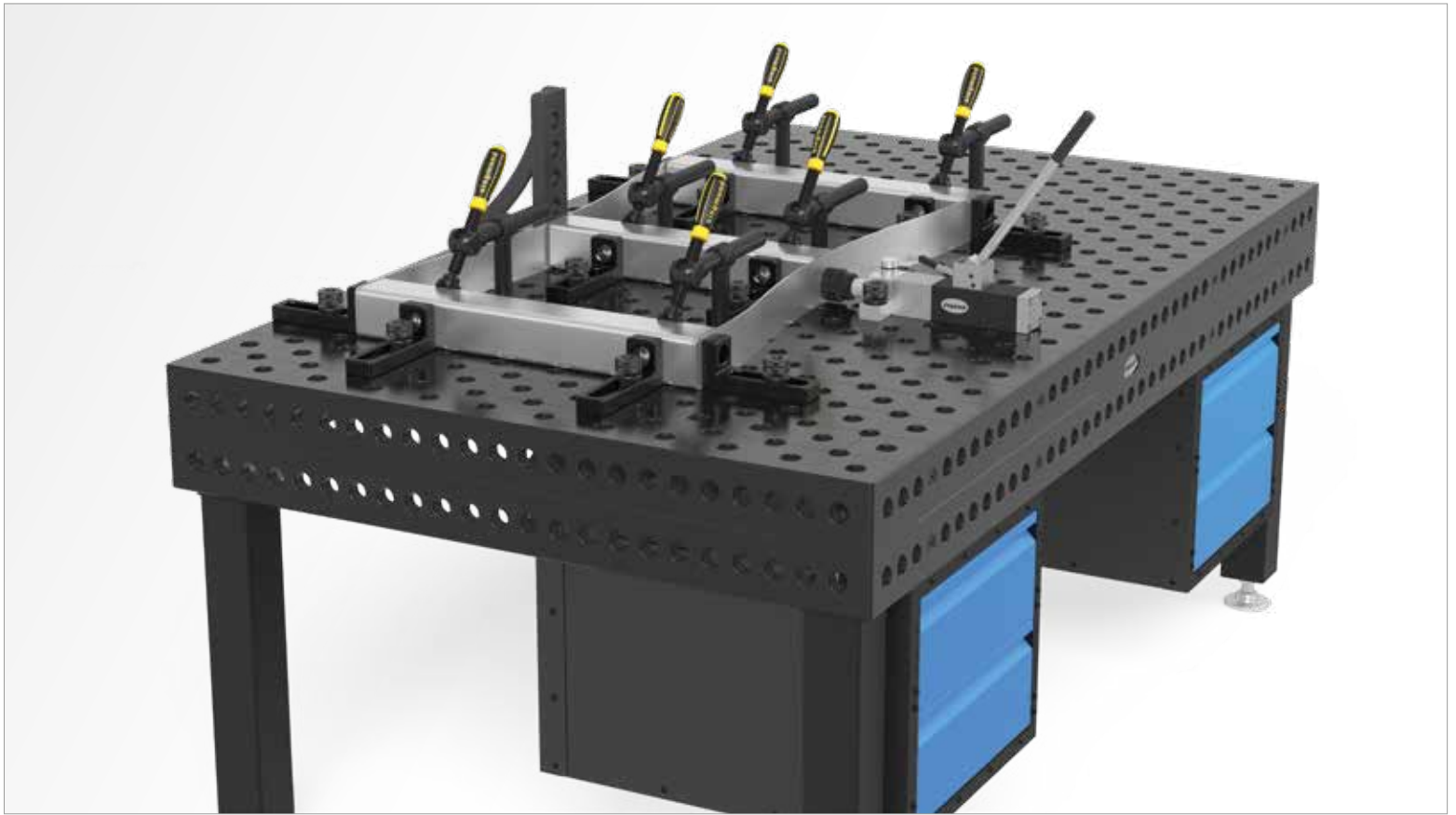
The total stroke is 60 mm, which can be achieved with 13 pump strokes with an operating force of approx. 330 N (stroke per pump stroke 4,6 mm). An overflow valve prevents additional pressure build-up when the piston rod is fully extended.

For a secure attachment on the table, the table press can be fixed through the turret head by using Fast Clamping Bolts or by the attached bolt.

The table press must always be fixed in two places.

Further accessories can be found at [www.siegmund.com](http://www.siegmund.com)





**Table press System 28**  
- for clamping and straightening

Weight:

Item No.

5,70 kg

2-28004643 ●

● = Item produced for stock; ○ = Item produced on order; Explanations see page 84

Further accessories can be found at [www.siegmund.com](http://www.siegmund.com)

