



Page 246
Fast Clamping Bolt short



Page 246
Fast Clamping Bolt long



Page 247
Universal Bolt, Comfort short



Page 247
Universal Bolt, Comfort long



Page 248
Universal Bolt, Basic short



Page 248
Universal Bolt, Basic long



Page 249
Positioning Bolt



Page 249
Positioning Bolt



Page 250
Fast Clamping Bolt, flat short



Page 250
Fast Clamping Bolt, flat long



Page 251
Flush Mount Bolt short



Page 251
Flush Mount Bolt long



Page 252
Fast Clamping Bolt with handle



Page 253
Connecting Bolt, hexagonal short



Page 254
Connecting Bolt short



Page 254
Connecting Bolt long



Page 254
Connecting Bolt long



Page 255
Connecting Bolt Siegmund <-> Siegmund Light



Page 256
Threaded Handwheel with Internal Allen Wrench short



Page 256
Threaded Handwheel with Internal Allen Wrench long



Page 256
Washer Packet for Bolts



Page 256
Adjusting Ring



Page 258
Magnetic Clamping Bolt 68



Page 258
Magnetic Clamping Bolt 93



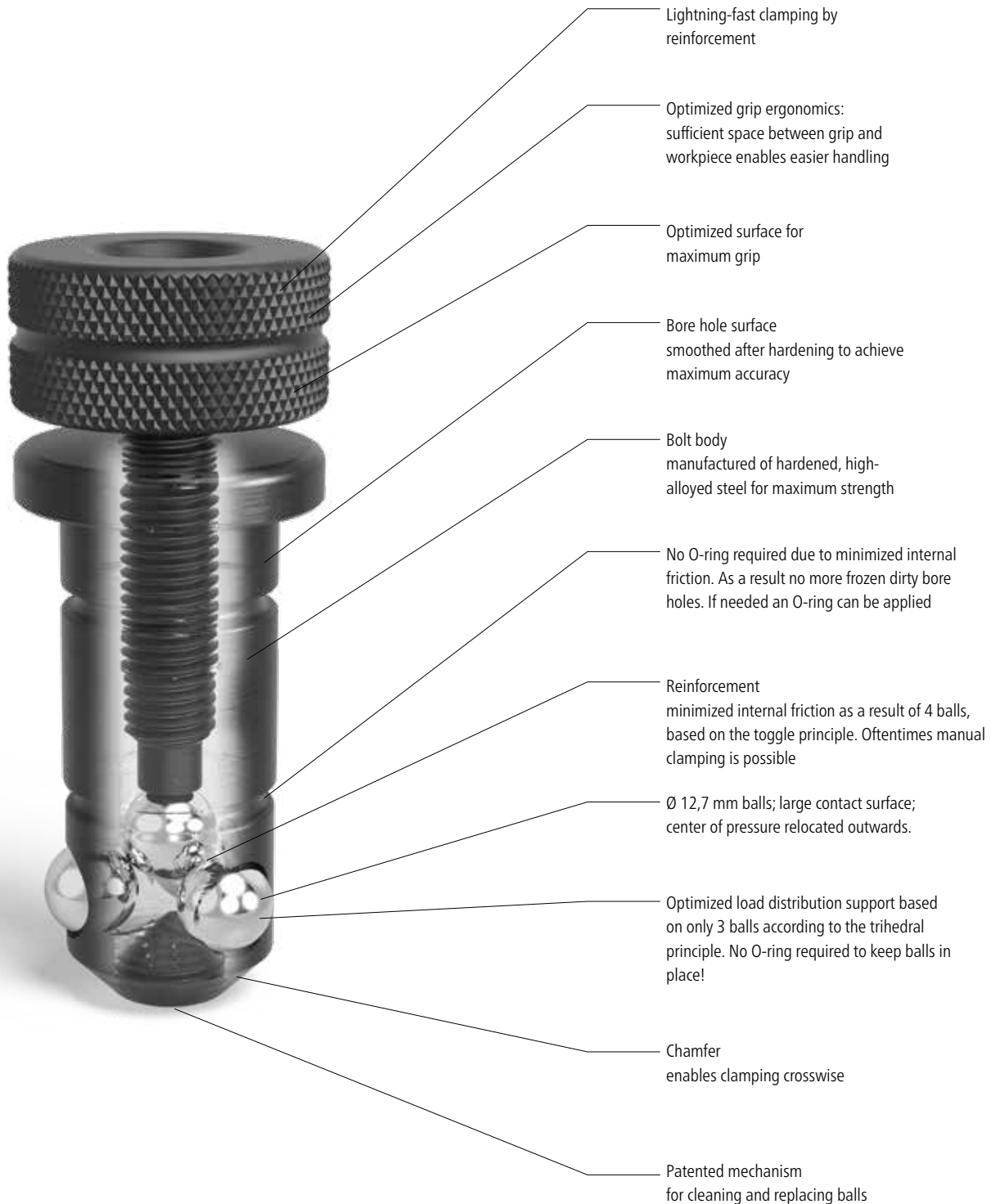
Page 258
Magnetic Clamping Bolt 118



Bolts

Lightning-fast and optimized

Due to its well-engineered mechanism it can be fixed and released by hand within seconds.



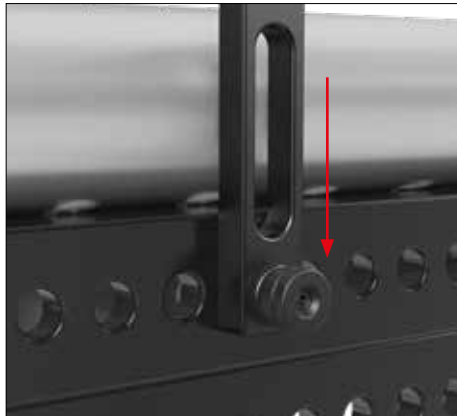


TIGHTENING TORQUE (AM)

The tightening torque is the force required to fasten the bolt using a torque wrench. In order to achieve maximum clamping force, the tightening torque should not exceed the recommended guideline.

The bolt was designed to only require a low torque to reach maximum clamping force, thereby enabling simple manual clamping.

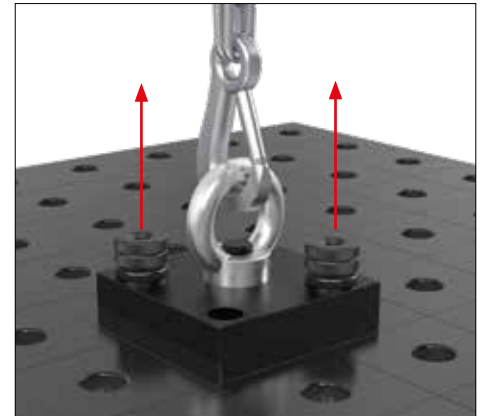
Max. AM of 280510: ≤ 25 Nm



SHEARING FORCE (SK)

The shearing force is the force which reacts laterally to the cross-sectional area of the bolt.

Max. SK of 280510: ≤ 220 kN



TENSILE FORCE (ZK)

The tensile force is the force created when pulling on fixed bolts.

Max. ZK of 280510: ≤ 25 kN



You can also find the product video on:

www.siegmund.com/V280510



Fast Clamping Bolt



280510

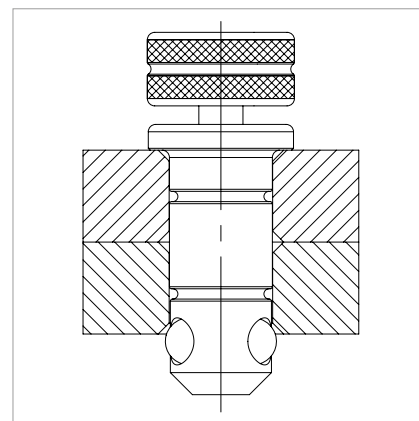


280512

Description:

Burnished Fast Clamping Bolt with twistlock, perfect connecting element between Siegmund components. It features especially large balls, which protect the bevel of the bore holes as a result of low surface pressure. The fourth ball located in the center, reduces internal friction and strengthens the power of the handwheel. The new design of the bolt is not equipped with O-rings, but it still is easy to clean.

This Bolt is NOT approved for combining tables and U-shaped squares!



	Length: (a)	Ø: (o)	Weight:	SK:	AM:	ZK:	Item No.
Fast Clamping Bolt short - for clamping 2 components - burnished - with screw top	95 mm	28 mm	0,54 kg	220,00 kN	25,00 Nm	25,00 kN	2-280510 ●
Fast Clamping Bolt long - for clamping 3 components - burnished - with screw top	120 mm	28 mm	0,65 kg	220,00 kN	25,00 Nm	25,00 kN	2-280512 ●

SK=Shearing Force; AM=Tightening Torque; ZK=Tensile Force; ● = Item produced for stock; ○ = Item produced on order; Explanations see page 84

Universal Bolt, Comfort

Description:

Burnished Universal Bolt (locking bolt), perfect connection element for Siegmund elements. It is used when elements of different material thickness are being interconnected. The clamping range of the short Universal Bolt is 45 to 53 mm. The long Universal Bolt has a clamping range of 70 to 78 mm. The large balls shift the center of pressure towards the outside, and prevent a displacement of the material due to low surface pressure, when there are high clamping forces in the direction of the bore hole.

The Universal Bolt is clamped with the integrated handwheel or with a Allen Key 14 (Item No. 280854).

This Bolt is NOT approved for combining tables and U-shaped squares!



280532



280533



	Length: (a)	Ø: (o)	Weight:	SK:	AM:	ZK:	Item No.
Universal Bolt, Comfort short - for clamping 2 components - burnished	100 mm	28 mm	0,60 kg	200,00 kN	25,00 Nm	25,00 kN	2-280532 ●
Universal Bolt, Comfort long - for clamping 3 components - burnished	125 mm	28 mm	0,70 kg	200,00 kN	25,00 Nm	25,00 kN	2-280533 ●

SK=Shearing Force; AM=Tightening Torque; ZK=Tensile Force; ● = Item produced for stock; ○ = Item produced on order; Explanations see page 84

Universal Bolt Basic



280536

280537

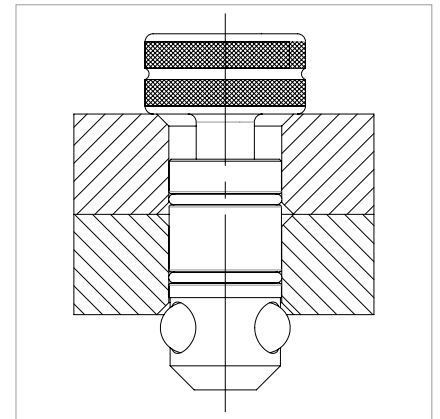
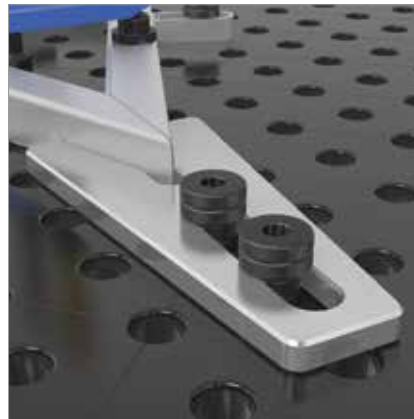
Description:

Burnished Universal Bolt, perfect connection element for Siegmund elements. It is used when elements of different material thickness are being interconnected. The clamping range of the Universal Bolt Basic is 42 to 57 mm. The Universal Bolt Long has a clamping range of 67 to 82 mm. The Universal Bolt Comfort is self centered inside the drillholes by the O-ring. The large balls shift the center of pressure towards the outside, and prevent a displacement of the material due to low surface pressure, when there are high clamping forces in the direction of the bore hole.

The Universal Bolt Comfort is clamped with the integrated handwheel or with an Allen Key 14 (Item No. 280854).

This Bolt is NOT approved for combining tables and U-shaped squares!

The borehole should be cleaned with the brush before using this simple, inexpensive bolt.



	Length: (a)	Ø: (o)	Weight:	SK:	AM:	ZK:	Item No.
Universal Bolt, Basic short - for clamping 2 components - burnished	84 mm	28 mm	0,43 kg	200,00 kN	25,00 Nm	25,00 kN	2-280536 ●
Universal Bolt, Basic long - for clamping 3 components - burnished	108 mm	28 mm	0,55 kg	200,00 kN	25,00 Nm	25,00 kN	2-280537 ●

SK=Shearing Force; AM=Tightening Torque; ZK=Tensile Force; ● = Item produced for stock; ○ = Item produced on order; Explanations see page 84

Positioning Bolt

Description:

Positioning Bolt, serves as an adjustment tool for squares that only require a clamping bolt for fastening, in order to cost-effectively substitute for a second clamping bolt. In addition, various squares can be formed by spading, e.g. 90° or 45°.

This picture shows an application example of a customer generated template.

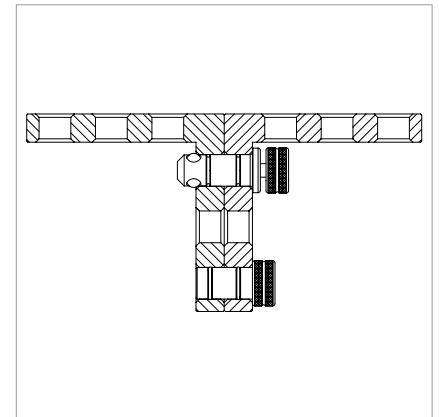
This Bolt is NOT approved for combining tables and U-shaped squares!



280540



280541



	Length: (a)	Ø: (o)	Weight:	Item No.
Positioning Bolt - burnished	70 mm	28 mm	0,40 kg	2-280540 ●
Positioning Bolt - to fix connecting frame on rail	90 mm	28 mm	0,53 kg	2-280541 ●

● = Item produced for stock; ○ = Item produced on order; Explanations see page 84



Fast Clamping Bolt, flat

Description:

Flat Burnished Clamping Bolt, mainly used for clamping of oblong holes. Like the countersunk bolt, it reduces protrusion.

Ideal for cordless screwdriver with up to 25 Nm turning moment.

This Bolt is NOT approved for combining tables and U-shaped squares!



280522

280523



	Length: (a)	Ø: (o)	Weight:	SK:	AM:	ZK:	Item No.
Fast Clamping Bolt, flat short - for clamping 2 components - burnished	74 mm	28 mm	0,36 kg	220,00 kN	25,00 Nm	25,00 kN	2-280522 ●
Fast Clamping Bolt, flat long - for clamping 3 components - burnished	99 mm	28 mm	0,46 kg	220,00 kN	25,00 Nm	25,00 kN	2-280523 ●
Setscrew for 280522 - pack of 10							2-289020 ●
Setscrew for 280523 - pack of 10							2-289013 ●

SK=Shearing Force; AM=Tightening Torque; ZK=Tensile Force; ● = Item produced for stock; ○ = Item produced on order; Explanations see page 84

Flush Mount Bolt

Description:

Flush Mount Bolt, used as a hidden connection between Siegmund elements. Its design corresponds with other connecting bolts with four balls. Its head disappears into the bore hole, to make it flush with the clamped component. The Flush Mount Bolt is not suitable for use in oblong slots.

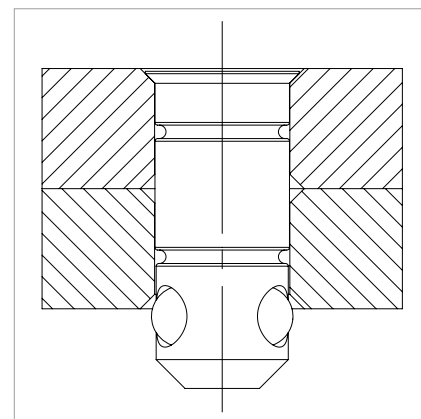
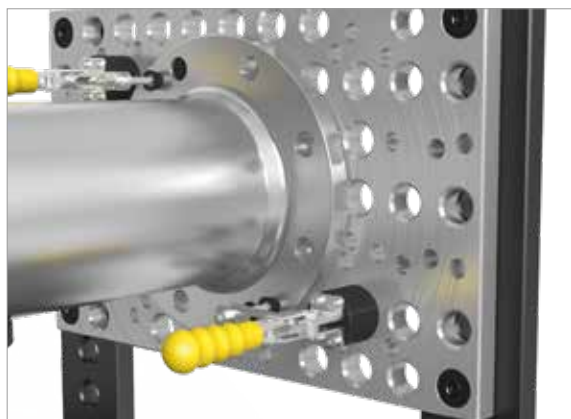
This Bolt is NOT approved for combining tables and U-shaped squares!



280528



280529



	Length: (a)	Ø: (o)	Weight:	SK:	AM:	ZK:	Item No.
Flush Mount Bolt short - for clamping 2 components - burnished	67 mm	28 mm	0,30 kg	220,00 kN	25,00 Nm	10,00 kN	2-280528 ●
Flush Mount Bolt long - for clamping 3 components - burnished	91 mm	28 mm	0,41 kg	220,00 kN	25,00 Nm	10,00 kN	2-280529 ●

SK=Shearing Force; AM=Tightening Torque; ZK=Tensile Force; ● = Item produced for stock; ○ = Item produced on order; Explanations see page 84



Fast Clamping Bolt with handle



280516

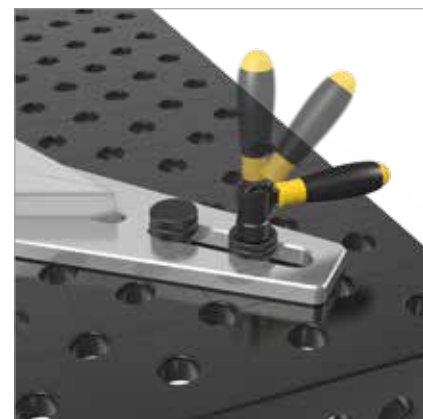
Description:

With the Fast Clamping Bolt with handle, components can be clamped quickly and easily without any additional tools.

The clamping stroke can be regulated with the adjusting nut in the range from 33 to 60 mm.

This Bolt is NOT approved for combining tables and U-shaped squares!

Available from 01.04.2019.



	Length: (a)	Ø: (o)	Weight:	SK:	ZK:	Item No.
Fast Clamping Bolt with handle - burnished	235 mm	28 mm	0,63 kg	220,00 kN	25,00 kN	2-280516 ●

SK=Shearing Force; ZK=Tensile Force; ● = Item produced for stock; ○ = Item produced on order; Explanations see page 84

Connecting Bolt, hexagonal

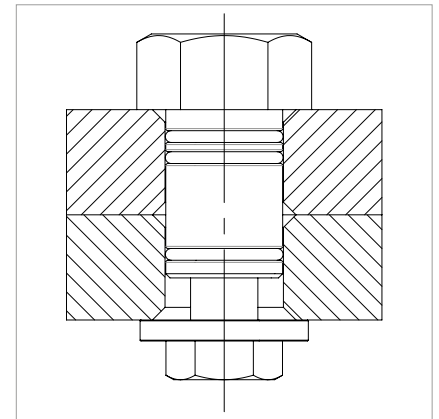
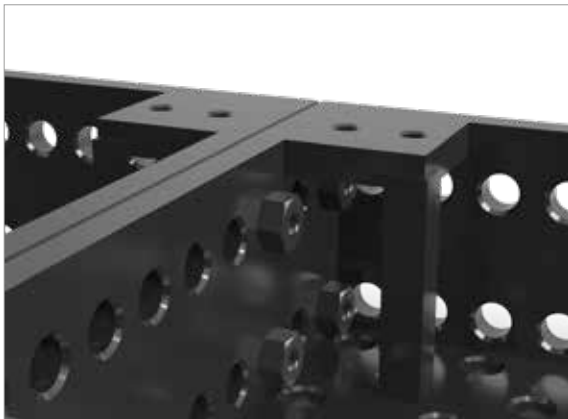
Description:

Burnished Connecting Bolt Hexagonal, especially designed as a fixed long term connection for system bore holes. The self-centering clamping bolt simplifies assembly.

The Connecting Bolt is clamped with an Allen Key 36 and 24.



280550.1



	Length: (a)	Ø: (o)	Weight:	SK:	AM:	ZK:	Item No.
Connecting Bolt, hexagonal short - for connecting 2 components - burnished - with Allen key	58 mm	28 mm	0,40 kg	200,00 kN	25,00 Nm	20,00 kN	2-280550.1 ●

SK=Shearing Force; AM=Tightening Torque; ZK=Tensile Force; ● = Item produced for stock; ○ = Item produced on order; Explanations see page 84

Connecting Bolt

Description:

Flushmount Connecting Bolt, especially designed to serve as a fixed long-term connection between large Siegmund components, e.g. tables or U-shaped squares.

The flush mount Allen Key, and the ability of the clamping bolt to center itself, facilitate simple assembly. The countersunk head and the countersunk-head screw are equipped with a 10 hexagonal bit for clamping.

The Connecting Bolt enables sturdy bolting. The Connecting Bolt is not suitable for the use in oblong slots.



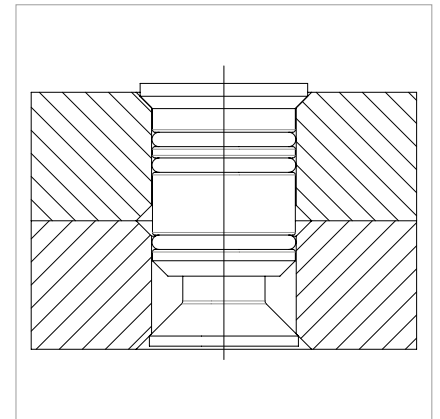
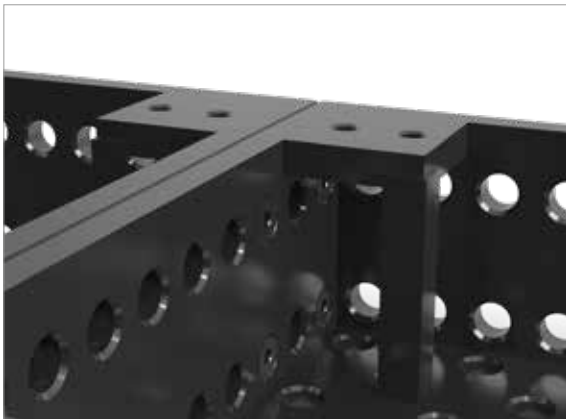
280560.N



280561



280562



		Length: (a)	Ø: (o)	Weight:	SK:	AM:	ZK:	Item No.
Connecting Bolt short								
- for connecting 2 components								
- nitrided		50 mm	28 mm	0,12 kg	200,00 kN	25,00 Nm	10,00 kN	2-280560.N ●
- with Allen key								
Connecting Bolt long								
- for connecting 3 components		75 mm	28 mm	0,20 kg	200,00 kN	25,00 Nm	10,00 kN	2-280561 ●
- burnished								
- with Allen key								
Connecting Bolt long								
- for connecting 4 components		100 mm	28 mm	0,34 kg	200,00 kN	25,00 Nm	10,00 kN	2-280562 ●
- burnished								
- with Allen key								

SK=Shearing Force; AM=Tightening Torque; ZK=Tensile Force; ● = Item produced for stock; ○ = Item produced on order; Explanations see page 84



= Scratch-proof



= Welding spatter protection



= Corrosion protection

Connecting Bolt Premium Light

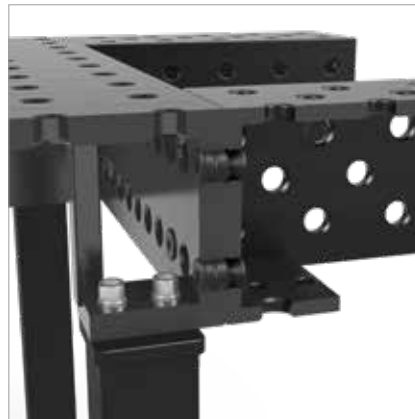
Description:

Connecting Bolt, especially designed to connect Siegmund tables and components (Material thickness 25 mm) with Siegmund Premium Light components (Material thickness 15 mm) using the system bore holes.

The Premium Light U-squares can be fastened to the table with the help of connecting bolts (Item No. 800562).



800562



Connecting Bolt Siegmund <-> Siegmund Light - burnished	Length: (a)	Ø: (o)	Weight:	Item No.
	40 mm	28 mm	0,15 kg	2-800562 ●

● = Item produced for stock; ○ = Item produced on order; Explanations see page 84

Spare Parts for Bolts



280510.1



280512.1



280501



280653



289007.10



289009.10



289010.10



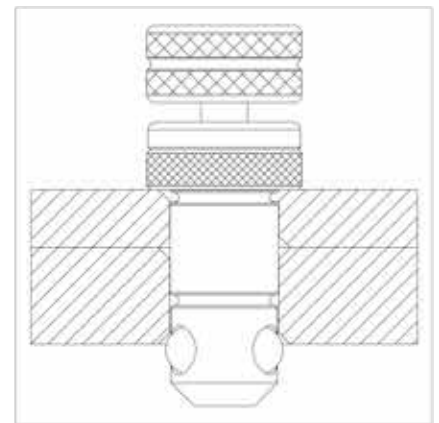
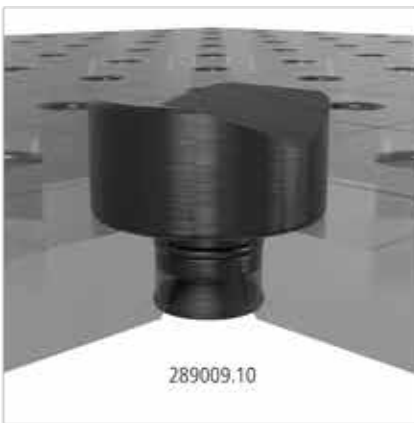
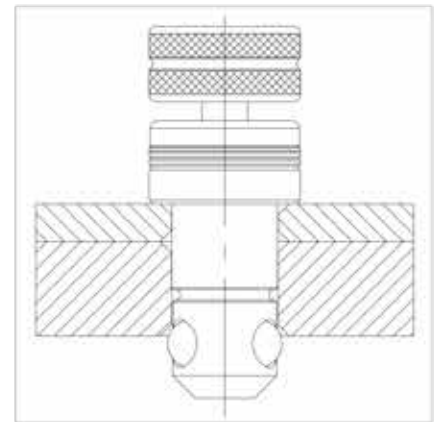
289016.10



289102

	Length: (a)	Height: (c)	Ø: (o)	Weight:	Item No.
Threaded Handwheel with Internal Allen Wrench short - Spare part for Fast Clamp Bolt 280510	70 mm		40 mm	0,23 kg	2-280510.1 ●
Threaded Handwheel with Internal Allen Wrench long - Spare part for Fast Clamp Bolt 280512	95 mm		40 mm	0,30 kg	2-280512.1 ●
Washer Packet for Bolts - for all bolts - consisting of: 1x washer 1 mm, 4x washer 2 mm, 1x washer 6 mm, 1x washer 10 mm				0,12 kg	2-280501 ●
Adjusting Ring - for 280604, 280625, 280608		10 mm	28 mm	0,05 kg	2-280653 ●
Balls - for system 28 clamping bolts - pack of 10					2-289007.10 ●
O-Ring, inside diameter 22 mm - for system 28 clamping bolts, prisms and positioning bolts - pack of 10					2-289009.10 ●
O-Ring, inside diameter 24 mm - for all system 28 clamping bolts - pack of 10					2-289010.10 ●
O-Ring, inside diameter 31 mm - for system 28 universal bolts comfort - pack of 10					2-289016.10 ●
Spare Parts for Bolts, old Version with O-rings + Balls - 10x 289009, 10x 289007, 10x 289010					2-289102 ●

● = Item produced for stock; ○ = Item produced on order; Explanations see page 84



Magnetic Clamping Bolt

Description:

Magnetical Clamping Bolt, enables fast clamping without bolting or the use of tools. It is preferable for pressure-sensitive parts like thin sheet metal, as well as elements that cannot be resisted, e.g. enclosed sheet metal housing.



280740



280740.1



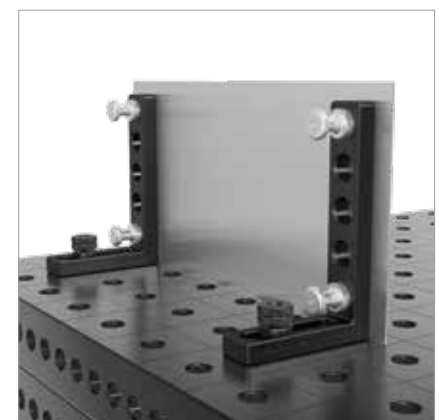
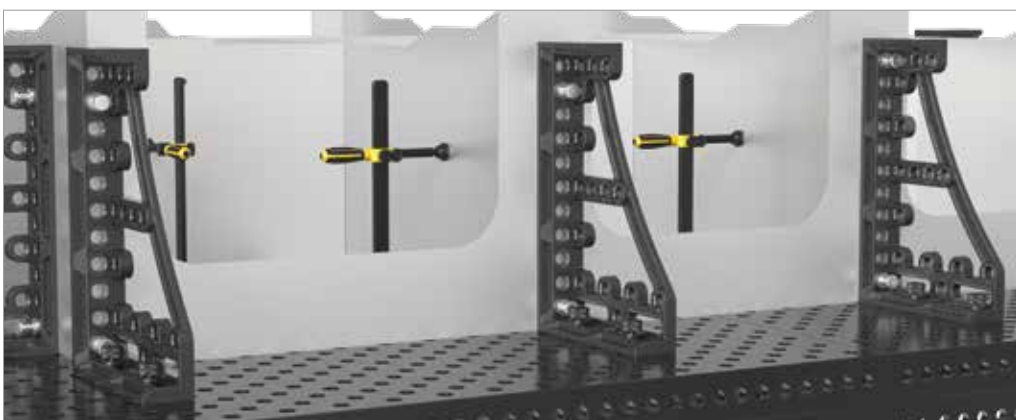
280740.2

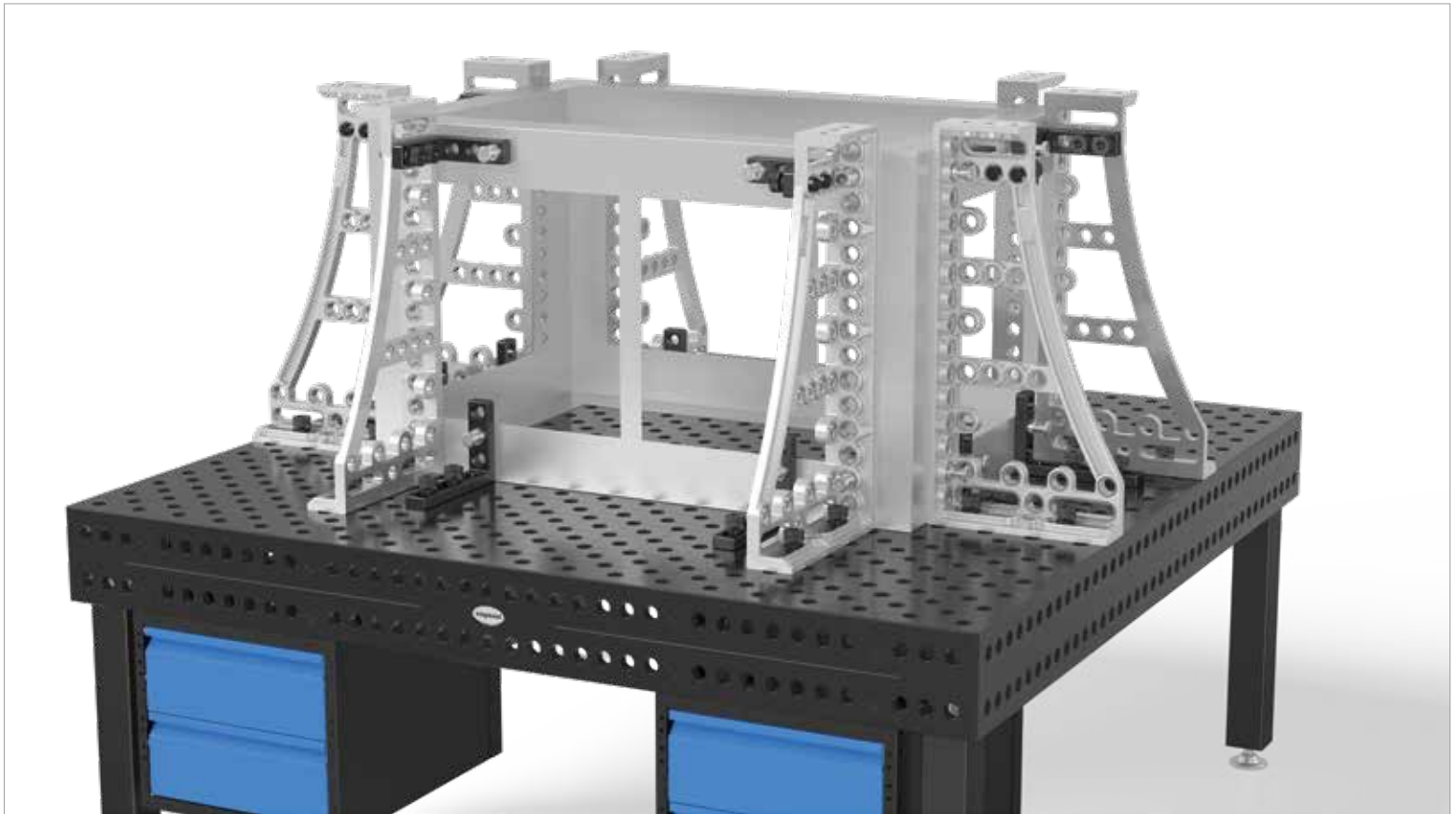


280741



280741.C





	Length: (a)	Ø: (o)	Weight:	Item No.
Magnetic Clamping Bolt 68 - Length of Shaft 25 mm - Aluminum	ALU 68 mm	28 mm	0,09 kg	2-280740 ●
Magnetic Clamping Bolt 93 - Length of Shaft 50 mm - Aluminum	ALU 93 mm	28 mm	0,13 kg	2-280740.1 ●
Magnetic Clamping Bolt 118 - Length of Shaft 75 mm - Aluminum	ALU 118 mm	28 mm	0,16 kg	2-280740.2 ●
Spacer Ring for Magnetic Bolt - burnished	25 mm	40 mm	0,12 kg	2-280741 ●
Spacer Ring for Magnetic Bolt - Chromed, Delivery time approx. 10 weeks	25 mm	40 mm	0,12 kg	2-280741.C ○

● = Item produced for stock; ○ = Item produced on order; Explanations see page 84